



# Cohesion policy 2014-2020 contributing to a more balanced territorial development

Marton Matko  
European Commission  
Directorate-General for Regional and Urban Policy  
'Inclusive growth, Urban and territorial development'

EESC MEL project final conference

9 Sept 2015

Regional &  
Urban Policy



# Structure of the presentation

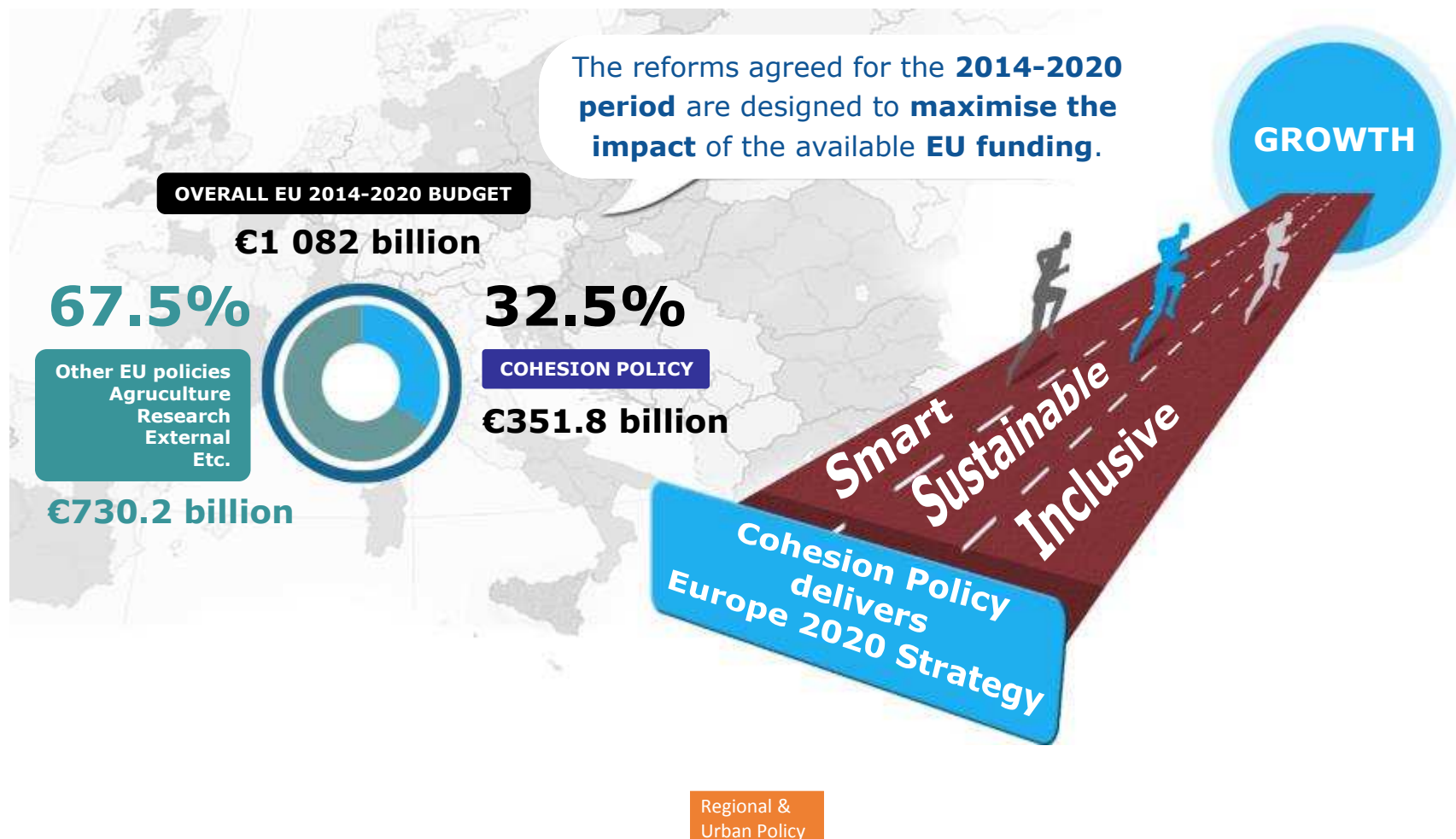
## **Looking at the recent past and the present**

How does Cohesion policy 2014-2020 contribute to a more balanced territorial development?

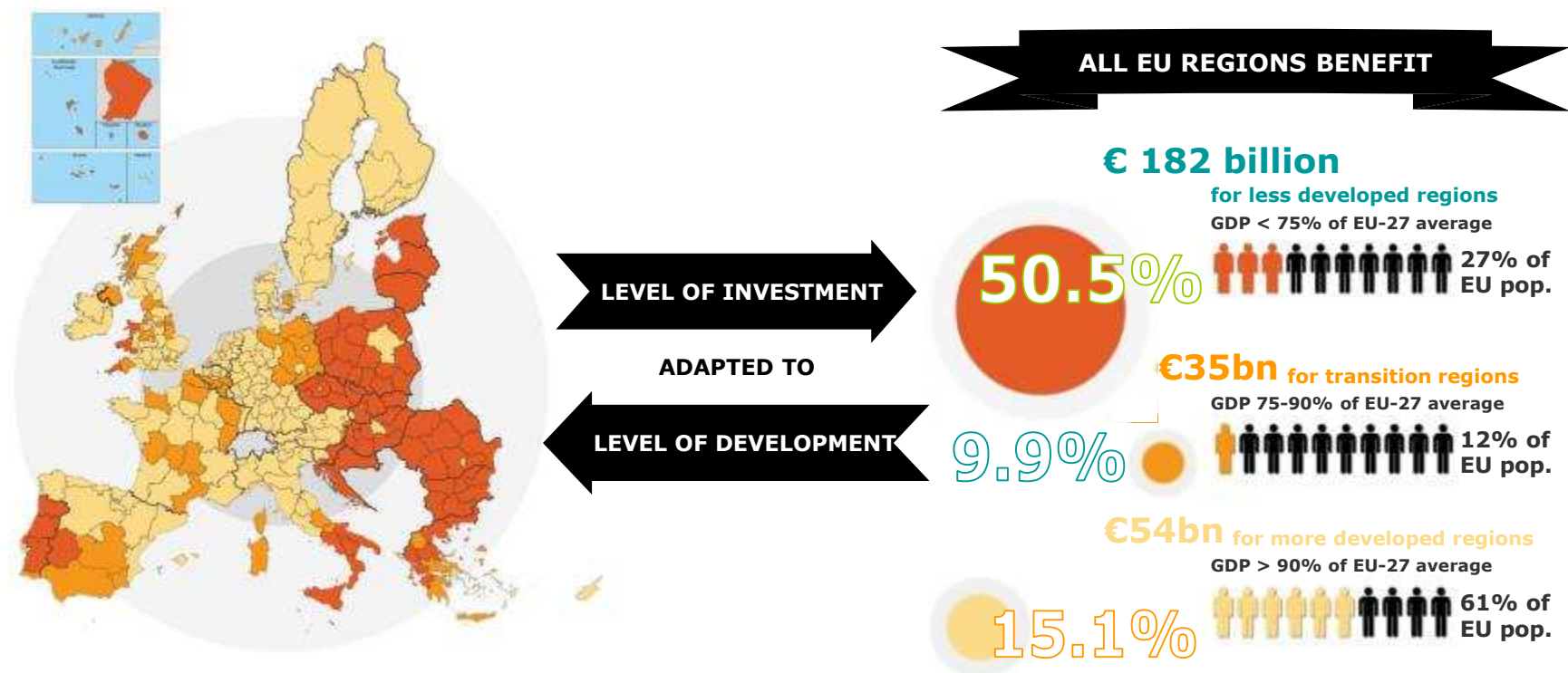
## **A glimpse of the future**

DG REGIO's forward looking work to enhance the contribution of EU policies to territorial cohesion

# Cohesion Policy: budget and objective



# Cohesion Policy: eligibility and focus (regions)





## New elements of legal framework 2014-2020

- First programming period with **territorial cohesion** as explicit objective in the Treaties (Art 174 TFEU)
- First programming period with **common strategic framework** for all ESI Funds (ERDF, ESF, CF, EAFRD, EMFF) and joint programming at Partnership Agreement level
- Strategic orientation linked to **EU2020 Strategy** objectives (sectorial approach)
- Reinforced **integrated approach to territorial development** (territorial approach)



# **How does Cohesion policy 2014-2020 contribute to a more balanced territorial development?**



# Integrated approach to territorial development, a new element in Cohesion Policy 2014-2020

1. **A territorial approach** in programming the intervention logic
2. **New instruments** supporting integrated territorial development
  1. Integrated territorial investment (ITI): a cross-sectorial approach
  2. Community-led local development (CLLD): a bottom-up approach
3. **Earmarked funds** for **sustainable urban development** promoting decentralised decision making and **urban-rural linkages**



# 1. Territorial approach in the intervention logic

In the Partnership Agreement and Operational Programmes, Member States are required to perform **an analysis of territorial disparities** and **identify specific development needs** to better **focus interventions territorially**

This analysis should cover at least the territories below:

- Geographical areas **most affected by poverty**/target groups at highest **risk of discrimination or social exclusion**, e.g.:
  - Rural regions suffering from widespread poverty and lack of infrastructure
  - Metropolitan regions with pockets of poverty and social exclusion
- Geographical areas which suffer from **severe natural or demographic handicaps**, e.g.:
  - **Remote** regions (outermost, mountainous, island regions)
  - Regions experiencing significant **depopulation**





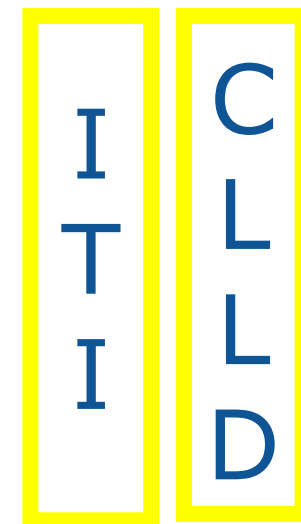
*Thematic dimension:* **Concentration on Europe 2020 priorities**

<p><b><u>Smart growth</u></b></p> <ul style="list-style-type: none"> <li>• Research &amp; Innovation</li> <li>• ICT</li> <li>• SME</li> </ul>	<p><b><u>Sustainable growth</u></b></p> <ul style="list-style-type: none"> <li>• Low-carbon</li> <li>• Resource-efficiency</li> <li>• Risk-prevention</li> <li>• Transport</li> </ul>	<p><b><u>Inclusive growth</u></b></p> <ul style="list-style-type: none"> <li>• Employment</li> <li>• Social inclusion</li> <li>• Education</li> </ul>
---	---	---

*Territorial dimension:* **Integrated strategies and actions**



**Instruments**





## 2. Territorial instruments

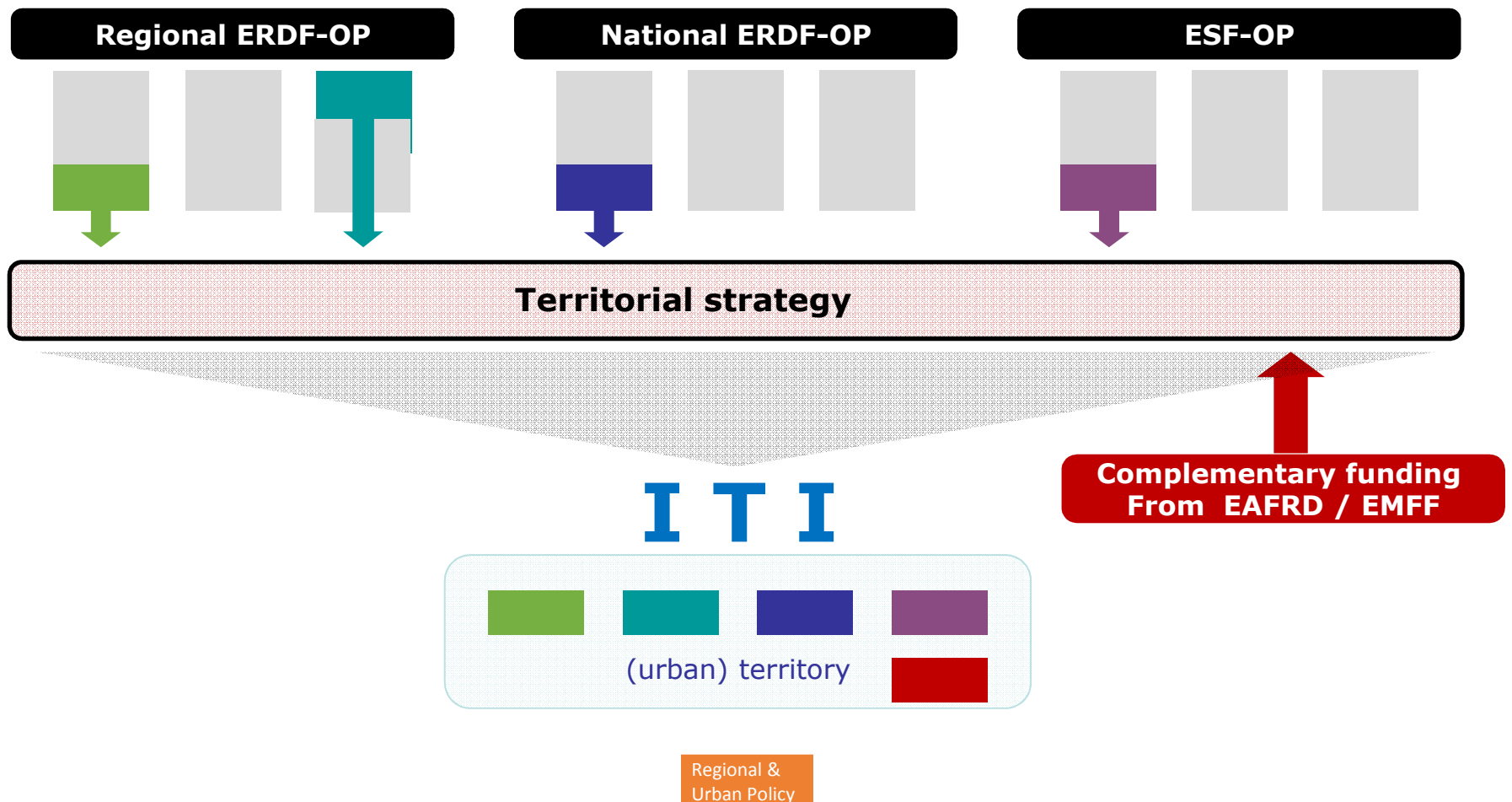
### 1. **ITI** (top-down, multi-sectorial)

A bundling of funds from different sectors/funds in order to support the implementation of an integrated development strategy of a specific sub-national territory

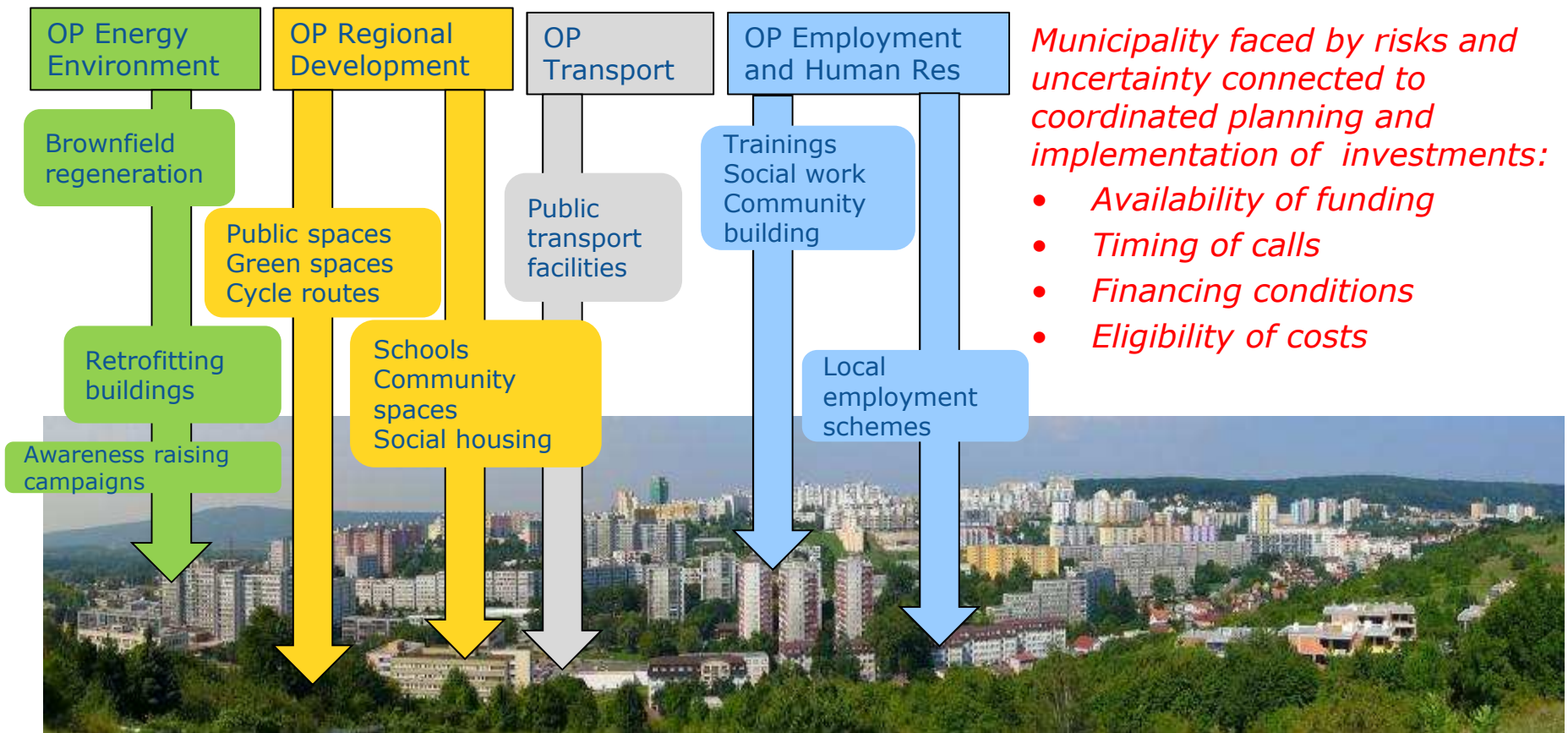
### 2. **CLLD** (bottom-up, multi-sectorial)

Financial support to /empowerment of local communities enabling them to better exploit their endogenous potential based on integrated local development strategies designed and implemented by local action groups (LAG)

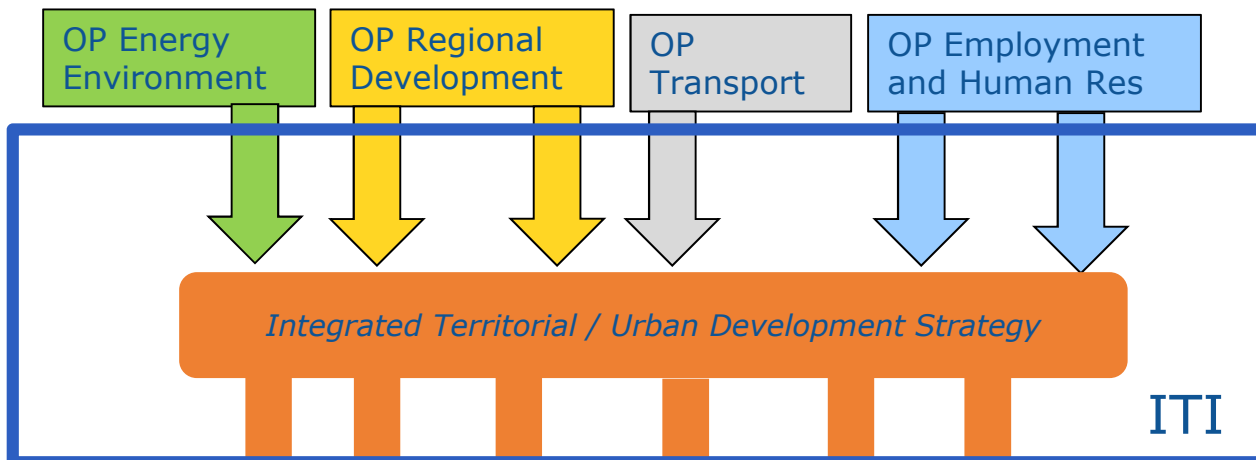
## ITI: Combination of funds and programmes



## From isolated channels of funding...



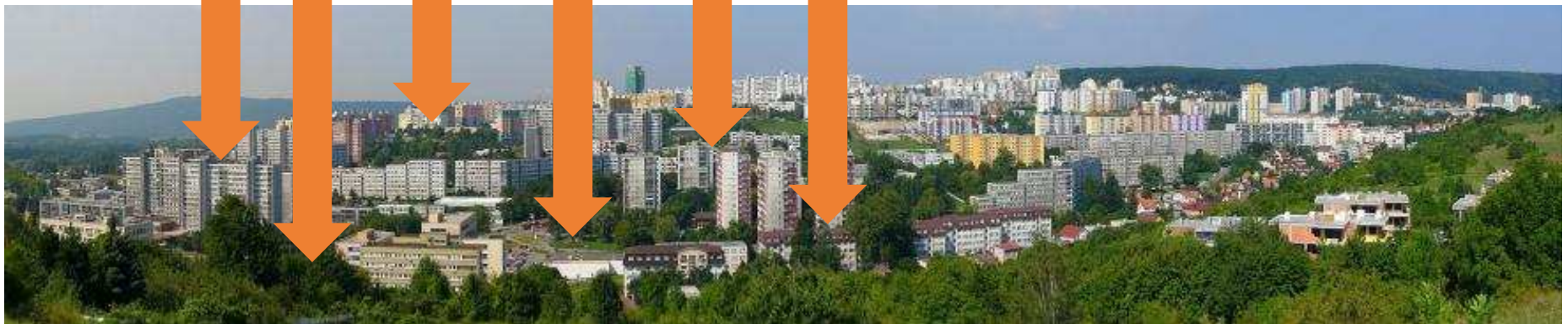
## ...to funding integrated strategies



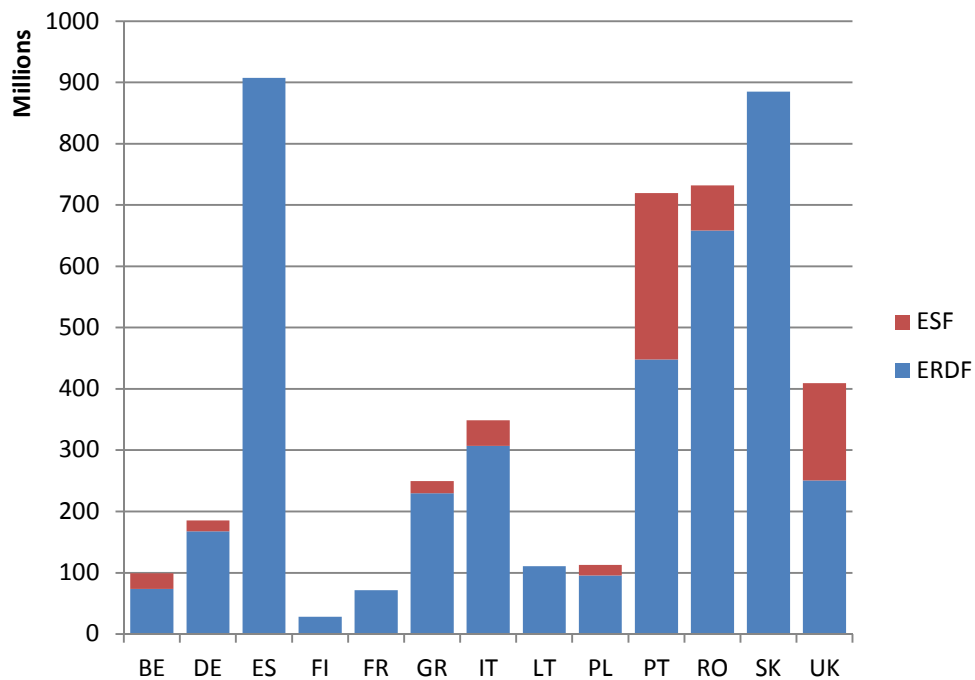
*Municipality elaborates integrated strategy (and selects projects)*

*Part of risks eliminated:*

- Availability, amount
- Timing



## Expected use of ITI in extra-urban areas



14 Member States,  
total allocation EUR 4.8 billion

Integration of ERDF/ESF 8 MS

Variety of areas

- Administrative regions
- Regions with specific challenges
  - Economic restructuring,
  - Natural or cultural heritage

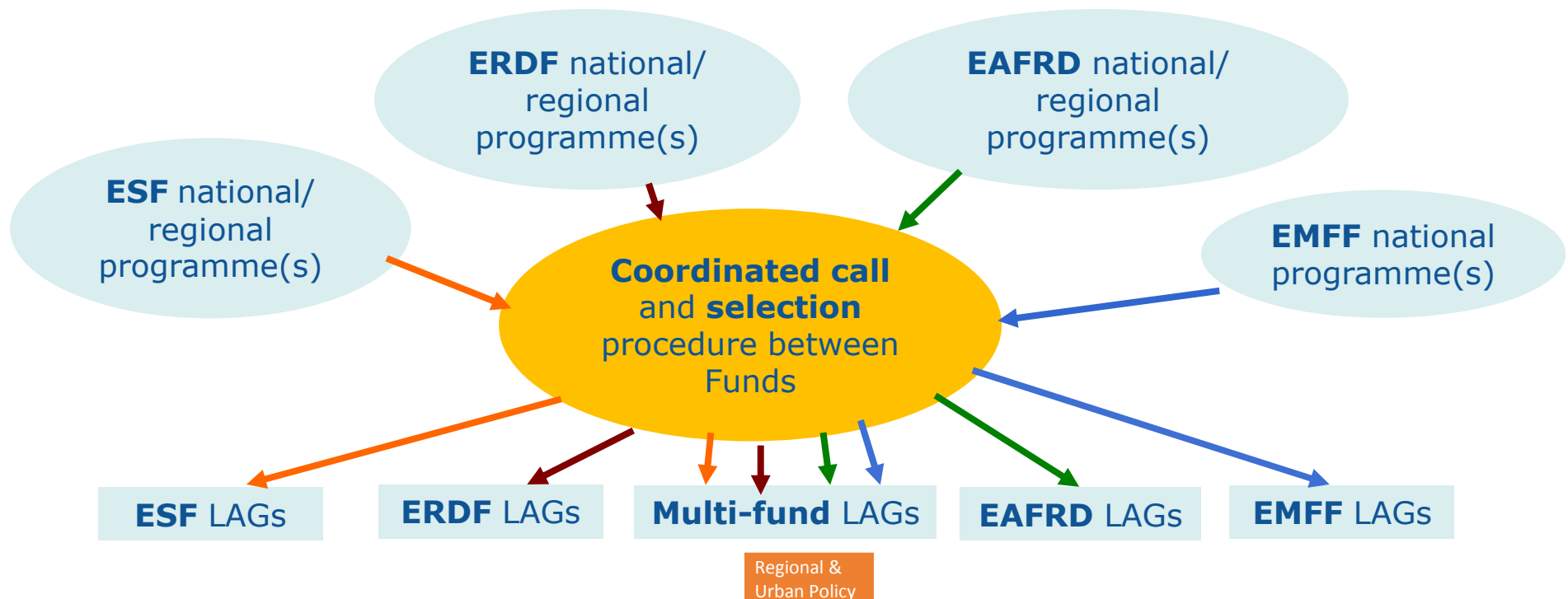
Bulk of allocation on transport and environment infrastructure and energy efficiency/renewables



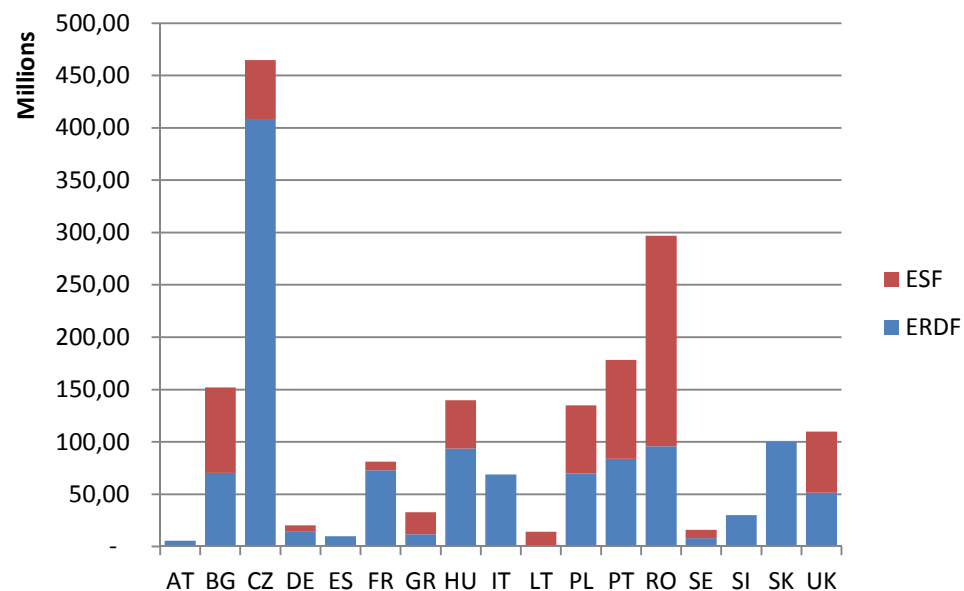
# CLLD in the strategic programming

## Partnership Agreement

implementation arrangements of CLLD:  
*(types of) territories, focus, funding, Fund coordination*



## Expected use of CLLD under Cohesion Policy



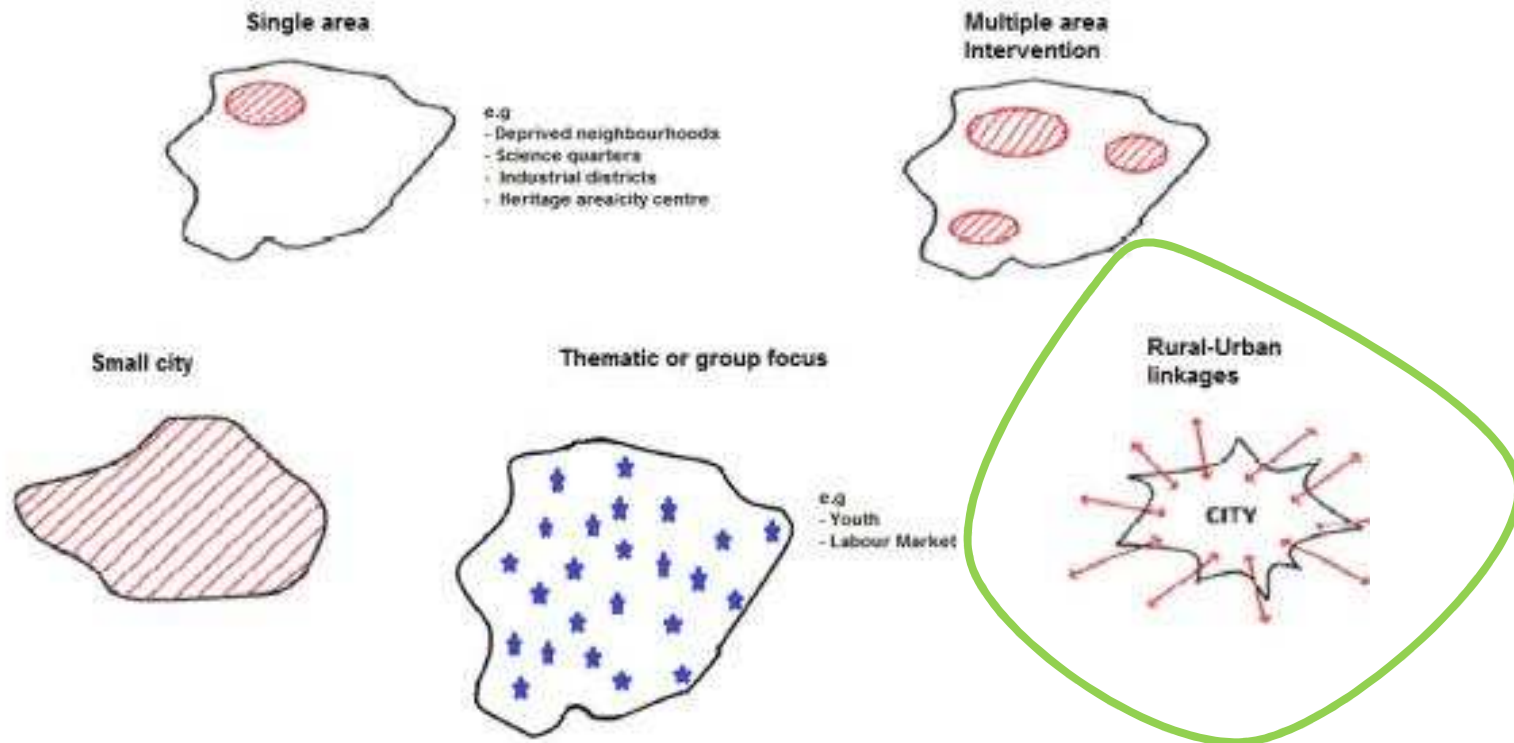
17 Member States,  
total allocation EUR 2 billion

Integration of ERDF/ESF 11 MS

- Variety of territorial scenarios
- Rural areas complementing EAFRD funding
  - Deprived urban areas
  - Urban-rural linkages



# CLLD: a variety of territorial scenarios





## Some project examples

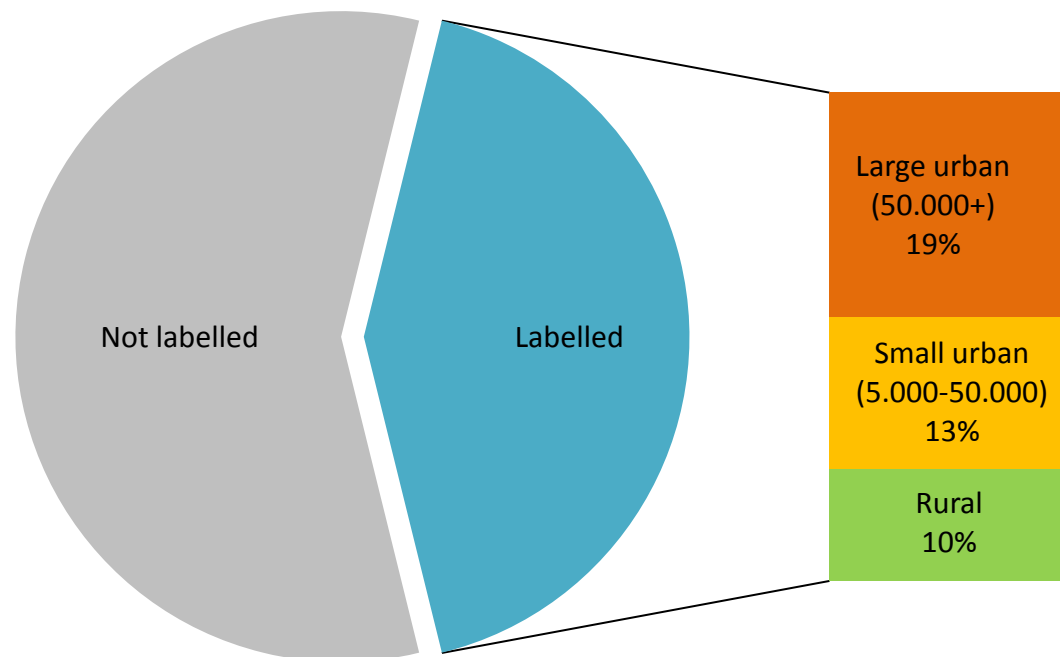
### ***RURBAN***

*[http://ec.europa.eu/regional\\_policy/en/information/videos/rural-urban-partnership-key-to-a-prosperous-future-for-europe](http://ec.europa.eu/regional_policy/en/information/videos/rural-urban-partnership-key-to-a-prosperous-future-for-europe)*

### ***Beacon***

*[http://ec.europa.eu/regional\\_policy/en/information/videos/regiostars-2014-beacon-creating-green-jobs-in-rural-wales](http://ec.europa.eu/regional_policy/en/information/videos/regiostars-2014-beacon-creating-green-jobs-in-rural-wales)*

# Preliminary allocation of Cohesion policy funds by type of territory





# **Forward-looking initiatives supporting a territorially more sensitive approach in designing/revising EU policies**



# Initiatives in pilot phase

## **1. Territorial impact assessment –**

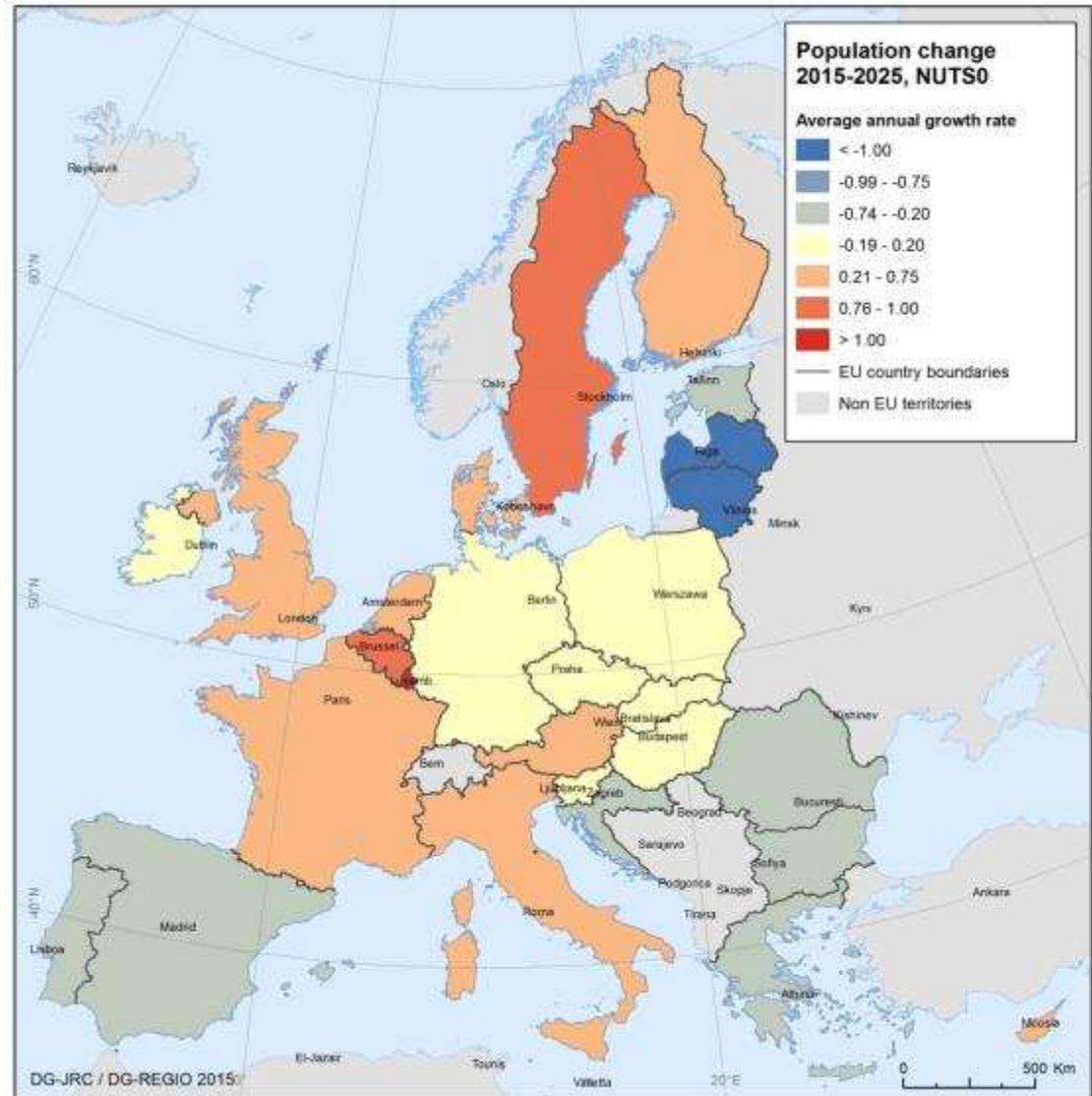
to provide evidence on expected impact of future EU legislation and policies on different territories

## **2. EU territorial scenarios –**

territorial projections in larger detail allowing for better spatial targeting of policies/programmes

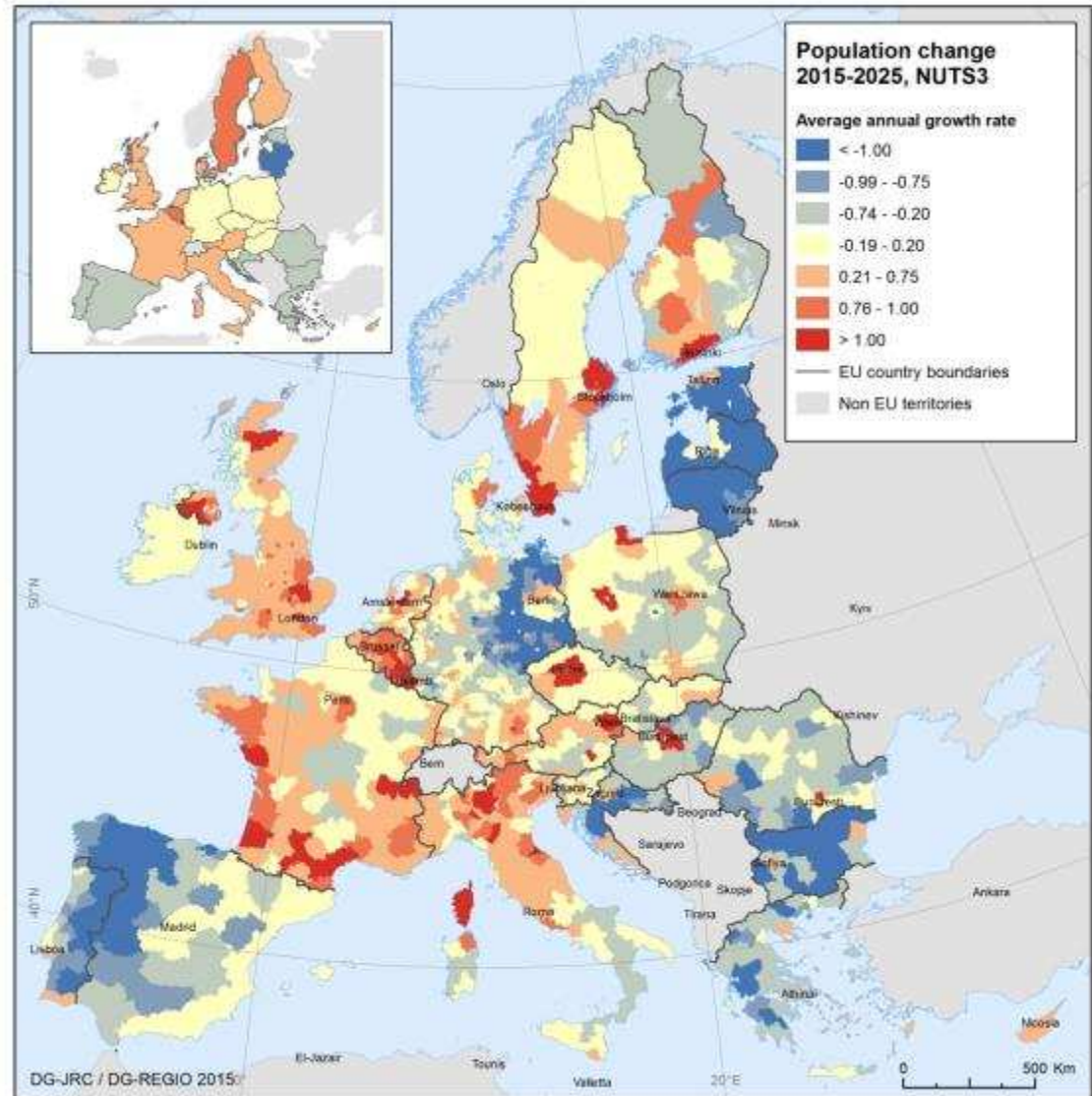


# Population





# Population





## Coming soon

- *Study on the Territorial Agenda 2020 implementation with a rural and urban-rural example;*
- *'Art 16' study will give an overview of programming (end 2015);*
- *A report on 'Scenarios for ITI'. At least one scenario for developing urban-rural linkages;*
- *Open Days workshop REGIO/AGRI on rural-urban linkages;*
- *Stronger urban-rural dimension in Urbact programme and Innovative Actions programme*





# Thank you!

[marton.matko@ec.europa.eu](mailto:marton.matko@ec.europa.eu)  
[ec.europa.eu/inforegio](http://ec.europa.eu/inforegio)