

Welcome to North Karelia!



Dr. Pentti Hyttinen
Regional Council of North Karelia

The easternmost corner of the continental EU



**Virmajärvi, Ilomantsi,
North-Karelia, Finland**

Region of North Karelia (NUTS 3)

- population 166.000
- area 21.600 km²
- water 3.800 km²
- 14 municipalities





Regional Council of North Karelia

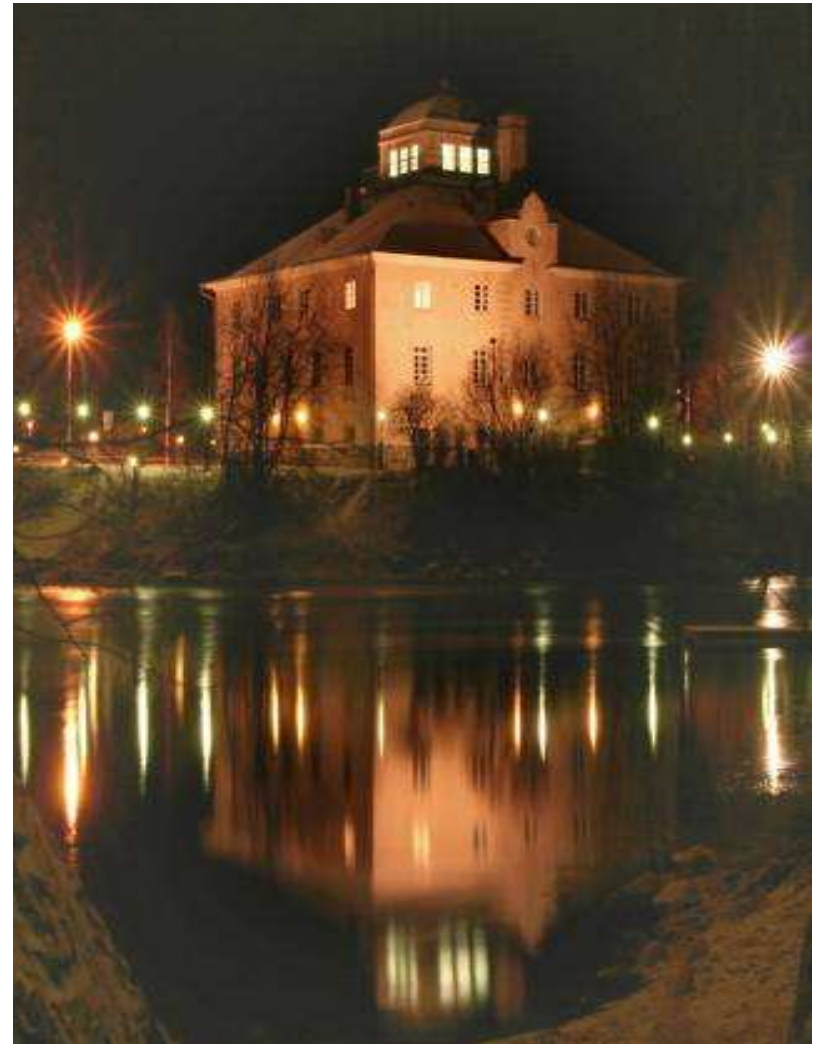
**Federation of the 14 municipalities
of the region**

**Overall responsibility of regional
development activities**

Allocation of the EU funds

Land use planning

Regional PR and lobbying



Special expertise in forest and wood sector

- ❖ European Forest Institute
- ❖ Finnish Forest Research Institute
- ❖ University of Joensuu
- ❖ University of Applied Sciences
- ❖ Joensuu Science Park
- ❖ etc...



Leading European region of forest technology industries



 OUTOKUMMUN METALLI OY



 Pentin Paja Oy



 JOHN DEERE



 MANTSINEN



Employment by companies in North Karelia



Stora Enso Oyj	920
PKO	890
Abloy Oy	840
K-ryhmä	800
VR-yhtiöt	440
Itella Oyj	440
OP-ryhmä	430
Elisa Oyj	400
John Deere Forestry Oy	390
Tulikivi Oyj	370
UPM-Kymmene Oyj	350
P-K:n Kirjapaino Oyj	280
P-K:n Sähkö	270
Kesla Oyj	270
ISS Palvelut Oy	250
Nunna-Uuni Oy	230
Vapo Oyj	200
Valio Oy	170

Large-scale industries

Back-bone for regional income



Enocell

Strategic paths for success

1) More with less

- productivity
- cost efficiency

2) Different things, in a different way than others

- ideas
- innovations



New innovations

Products

- to use forests and trees for new purposes & products

Processes

- to develop the existing ways to use forests and trees

Social innovations

- e.g. new models for cooperation networks



Recreation, landscapes, silence, ...



Koli



Koli Forum



Koli Forum On Natural Resources

**"Solutions to Questions of Renewable Energy
and the Mitigation of Climate Change"**

22-24 October 2009



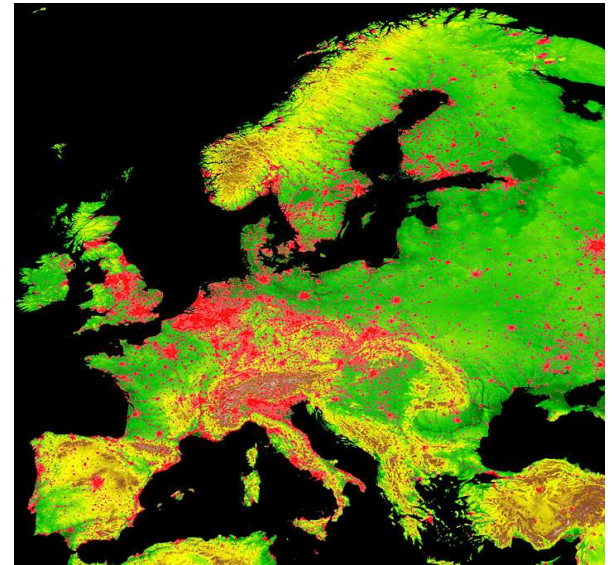
For over three decades, the **World Economic Forum** Annual Meeting has provided an unrivalled platform for leaders from all walks of life to shape the global agenda at the start of each year.

At the core is its multistakeholder model that leverages the collective wisdom of leaders from business, government, the media, academia, the arts and civil society by building a global platform for collaboration and action to address priorities on the global agenda.

Come back of mining industries?



Cold climate, sparse population & long distances



Carnivores in North Karelia

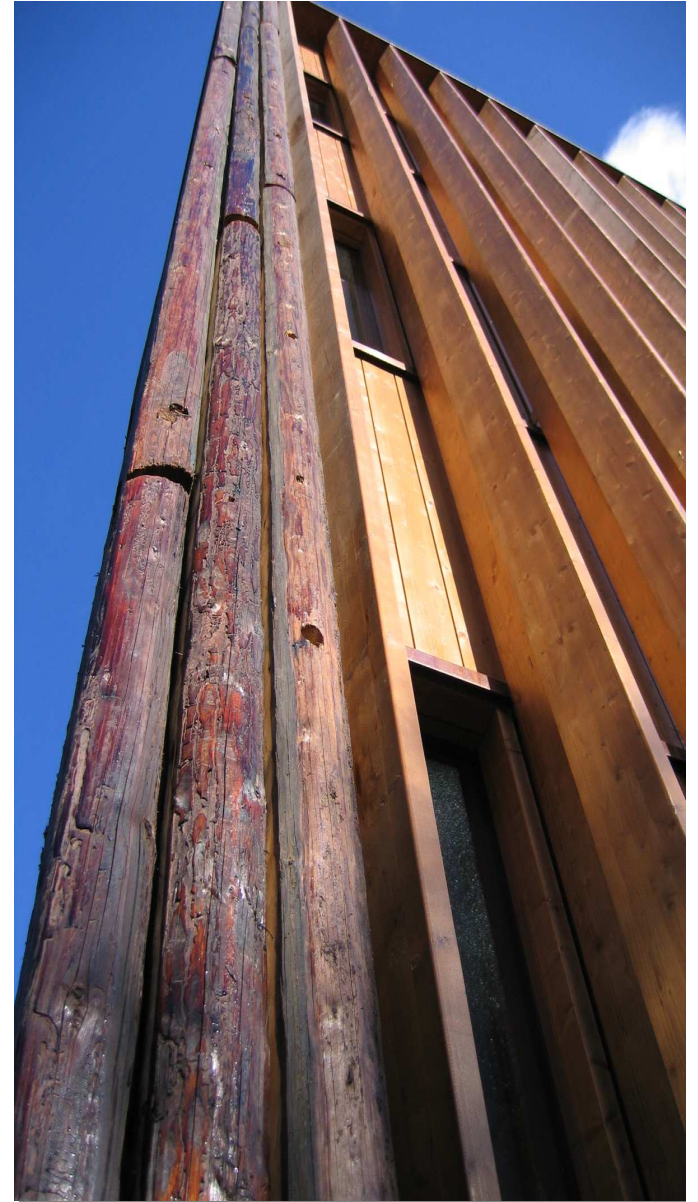
- ❖ Bears 245
- ❖ Wolves 70
- ❖ Lynxes 185
- ❖ Wolverines 45



Entrepreneurship
creates the jobs for today

Technological development
creates the jobs for tomorrow

Research and education
create the jobs for
the day after tomorrow





REGIONAL COUNCIL OF
North Karelia

www.pohjois-karjala.fi