

Introduction to the TEN-T Executive Agency



Ioannis Giogkarakis Argyropoulos
Head of Unit - Road and Rail Transport

FERRMED Final Conference
27 October 2009

TEN-T Executive Agency

- Mission, organisation, mandate and tasks
- Overview of the project lifecycle
- Rail projects: some statistics
- The FERRMED project



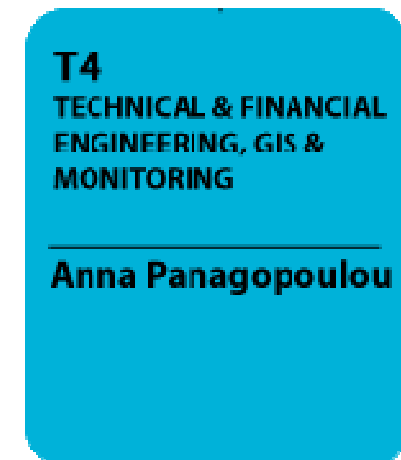
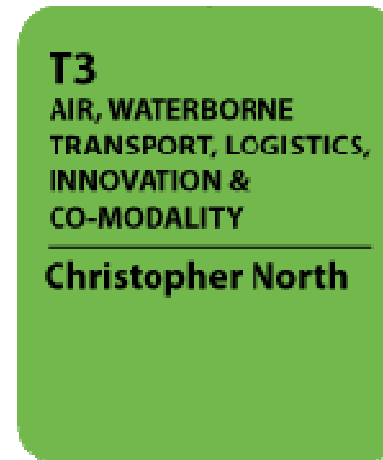
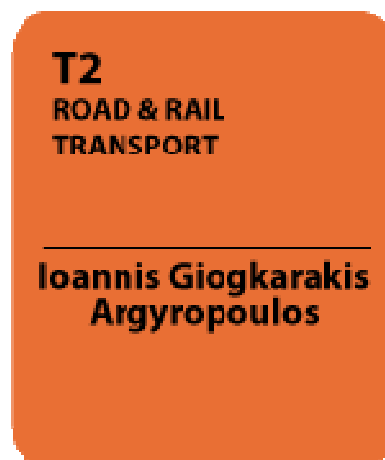
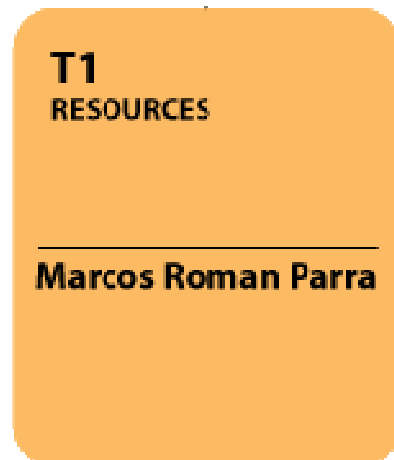
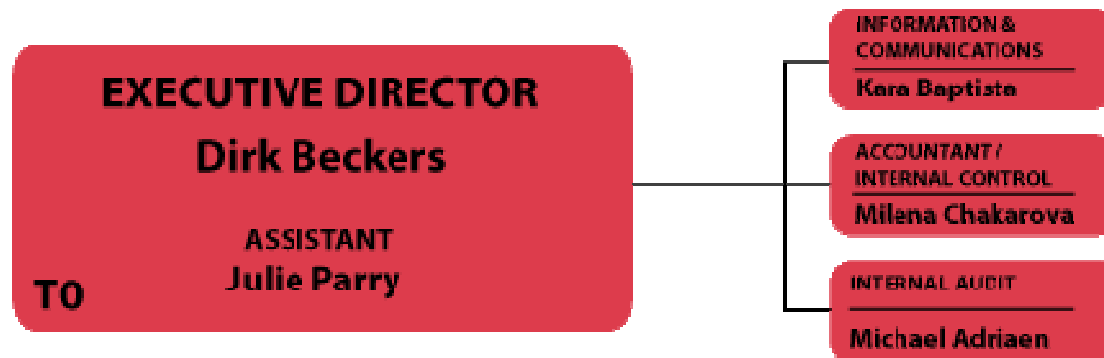
Our Mission

- Provide an efficient, effective, and overall excellent service in managing the implementation of the European Commission's TEN-T programme
- Operational Units: Provide added-value in the management of the TEN-T projects, in cooperation with all stakeholders, thereby contributing to the development & promotion of the European Transport Network



TEN-T EA Organigramme

Foreseen staff	
T0:	11
T1:	27
T2:	27
T3:	19
T4:	15
Total	99



TEN-T EA mandate

Responsible for managing the technical and financial implementation of the European Commission's TEN-T programme (*)

- Assisting DG TREN in the selection of projects and preparation of funding decisions
- Managing the financial implementation of individual projects: allocation of funds and payments to beneficiaries
- Following up all individual projects: examination of implementation plans, progress reports, site visits...
- Providing information/support to project promoters, Member States and the Commission

(*) Mandate until 31 December 2015 (2008/593/EC approved on 11 July 2008)



Tasks of DG TREN / TEN-T EA

DG TREN

defines the policy

- Makes political decisions regarding the programme
- Defines strategy, objectives and priority areas of action
- Supervises the Agency



TEN-T EA

turns policy into action

- Implements the TEN-T programme on behalf of the EC and under its responsibility
- Efficiently manages entire project lifecycle
- Communicates and interacts with beneficiaries
- Provides key feedback to the EC



Project lifecycle: who does what

DG TREN

- Sets the **policy**
- Prepares the **TEN-T Work Programme** (with input from the Agency)
- **Decides** on the **final projects' selection and provision of financing**
- **Adopts** the final Funding decisions

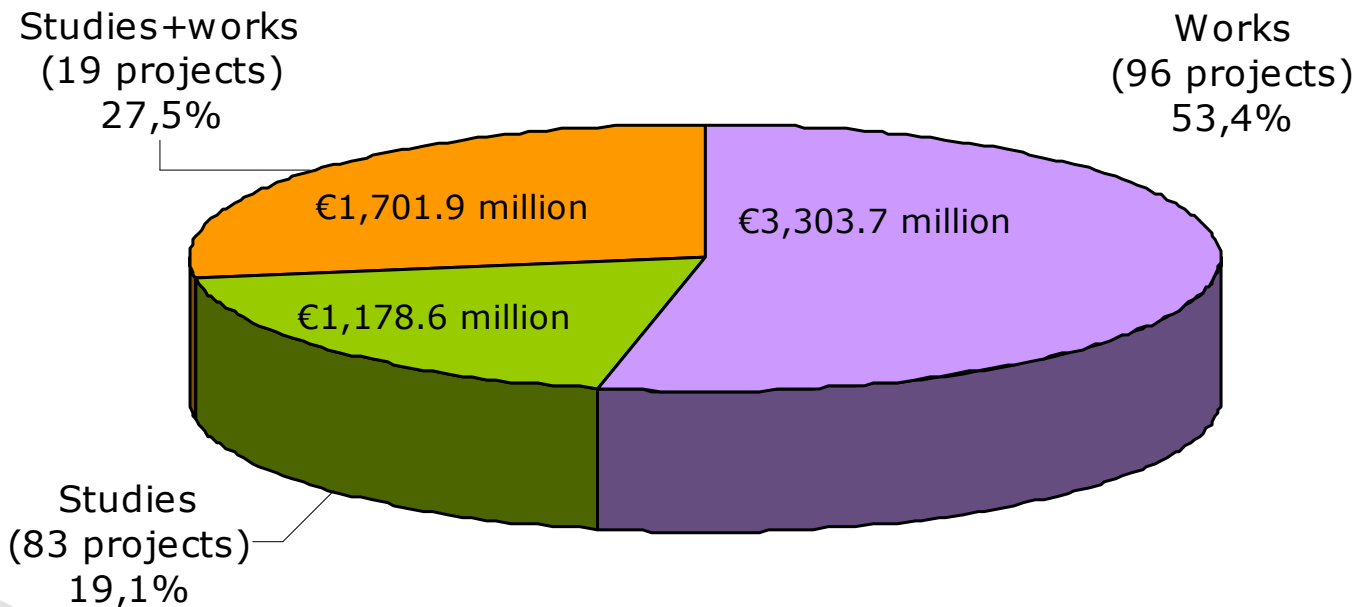
TEN-T EA

- Organises the **Calls** for proposals
- **Prepares** the draft Funding proposal
- **Negotiates** with the beneficiaries & **prepares** funding decision for each project
- Follows up the technical and financial **implementation** of the projects



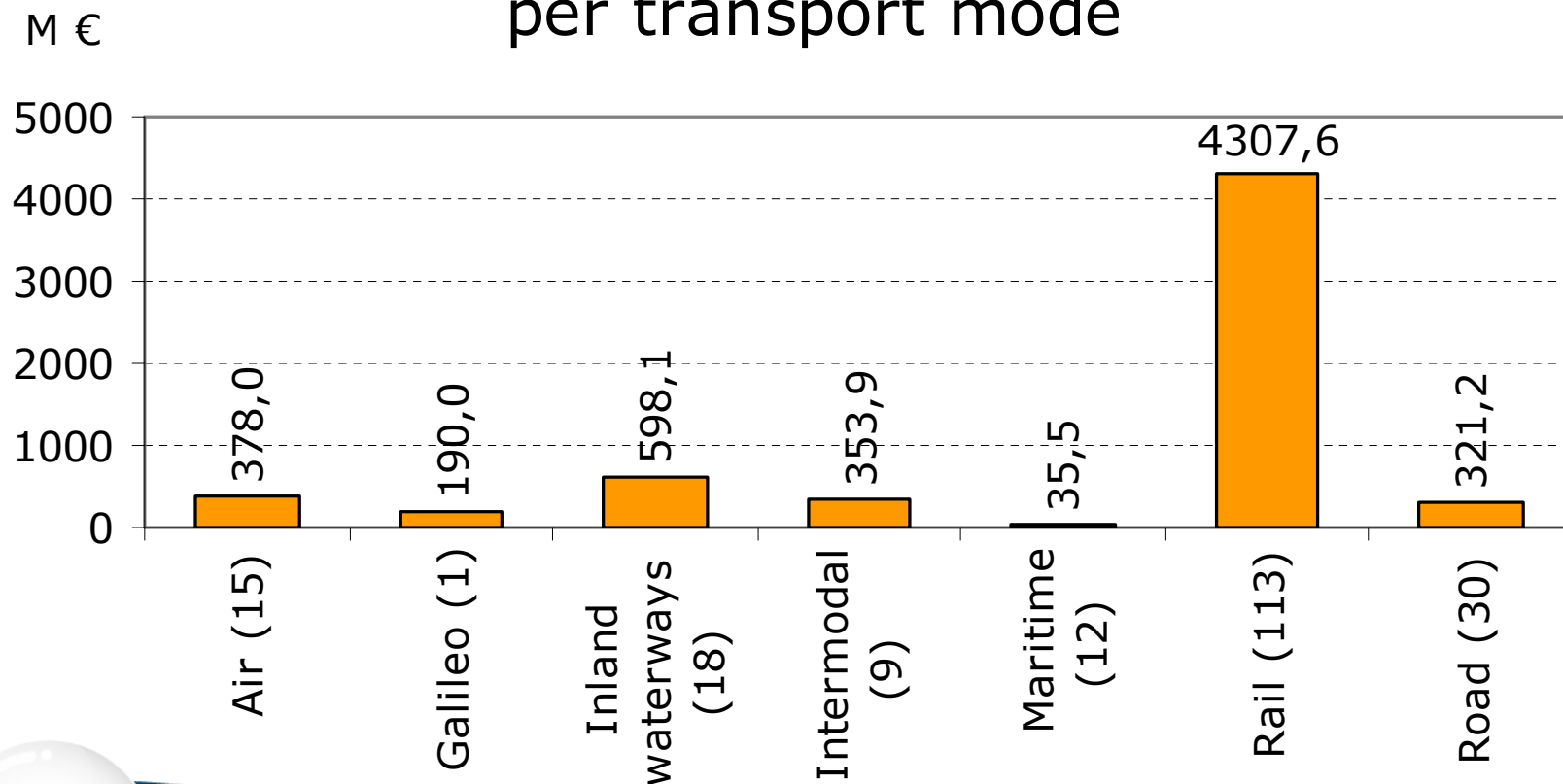
Some statistics

Share of current TEN-T contribution by
type of project



Some statistics

Total current TEN-T contribution (M €)
per transport mode

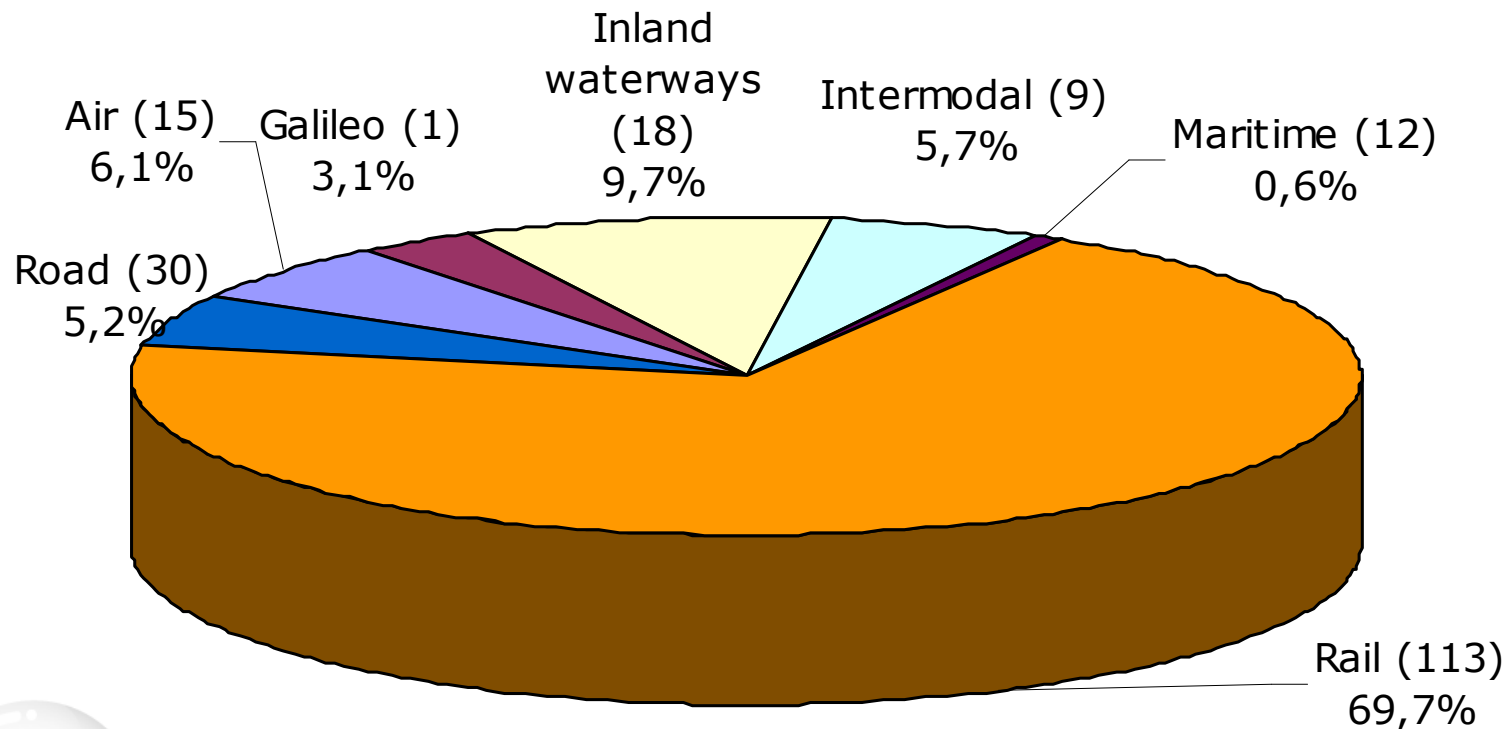


() = number of projects



Some statistics

Share of current TEN-T contribution by transport mode



() = number of projects





TRANS-EUROPEAN TRANSPORT NETWORK (TEN-T) Priority axes and projects (2020 horizon)

Priority projects	TEN-T priority axes
Road project	Road priority axis
Railway project	Railway priority axis
Multimodal project	Inland waterway priority axis
Inland waterway project	Motorway of the sea
Motorway of the sea project	TEN-T network
Airport project	TEN-T Road
Galileo	TEN-T Railway
	TEN-T Inland waterway

1. Railway axis Berlin-Verona-Milano-Bologna-Napoli-Messina-Palermo
2. High-speed railway axis Paris-Bruxelles/Brussel-Köln-Amsterdam-London
3. High-speed railway axis of south-west Europe
4. High-speed railway axis east
5. Between line (2007)
6. Railway axis Lyon-Trieste-Divača-Koper-Divača-Ljubljana-Budapest-Ukrainian border
7. Motorway axis Igumeni/Bar-Peja-Athina-Sofia-Budapest
8. Multimodal axis Portugal/Spain-east of Europe
9. Railway axis Cork-Dublin-Belfast-Stranraer (2001)
10. Malpasia (completed 2001)
11. Öresund fixed link (completed 2000)
12. Nordic triangle railway/cad axis
13. UK/Ireland/Benelux road axis (2010)
14. West coast main line (2007)
15. Galileo (2008)
16. Freight railway axis Sines-Madrid-Paris
17. Railway axis Paris-Strasbourg-Stuttgart-Wien-Bratislava
18. Rhine-Meuse-Main-Danube inland waterway axis
19. High-speed rail interoperability on the Iberian peninsula
20. Fehmarn Belt railway axis
21. Motorways of the sea
 - o Motorway of the Baltic Sea (linking the Baltic Sea Member States with Member States in Central and Western Europe, including the route through the North Sea/Baltic Sea Canal (Kiel Canal) (2010))
 - o Motorway of the sea of western Europe (leading from Portugal and Spain via the Atlantic Arc to the North Sea and the Irish Sea) (2010)
 - o Motorway of the sea of south-east Europe (connecting the Adriatic Sea to the Ionian Sea and the Eastern Mediterranean to include Cyprus) (2010)
 - o Motorway of the sea of south-west Europe (western Mediterranean), connecting Spain, France, Italy and including Malta, and linking with the motorway of the sea of south-east Europe (2010)
22. Railway axis Athens-Sofia-Budapest-Wien-Prague-Nürnberg/Dresden
23. Railway axis Gdańsk-Warszawa-Berlin/Bratislava-Wien
24. Railway axis Lyon-Genève-Basel-Düsseldorf-Rotterdam/Antwerpen
25. Motorway axis Gdansk-Berlin/Bratislava-Wien
26. Railway/road axis Ireland-United Kingdom/continental Europe
27. "Rail Baltica" axis Warsaw-Kaunas-Riga-Tallinn-Helsinki
28. "Eurocaprail" on the Brussels-Luxembourg-Strasbourg railway axis
29. Railway axis of the Ionian/Adriatic intermodal corridor
30. Inland waterway Seine-Scheldt

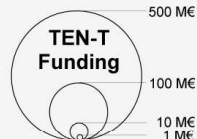


Trans-European transport network

RAILWAYS

Status of the projects monitored
by the TEN-T Executive Agency

- Study/Work
- Study
- Work



Achievement of the rail

Priority project sections (2008)

- Completed
- - - Works ongoing
- Works to start before 2010
- - - Works to start between 2010 and 2013
- Works to start after 2013

TEN-T (core network outside EU)

Railway

ERTMS MoU corridors

PRIORITY AXES

1. Railway axis Berlin-Verona/Milano-Bologna-Napoli-Messina-Palermo
2. High-speed railway axis Paris-Bruxelles/Brussel-Köln-Amsterdam-London
3. High-speed railway axis of south-west Europe
4. High-speed railway axis east
5. Betuwe line
6. Railway axis Lyon-Trieste-Divača/Koper-Divača-Ljubljana-Budapest-Ukrainian border
8. Multimodal axis Portugal/Spain-rest of Europe
9. Railway axis Cork-Dublin-Belfast-Stuttgart-Wien-Bratislava
11. Öresund fixed link (completed 2000)
12. Nordic triangle railway/road axis
14. West coast main line
16. Freight railway axis Sines/Algeiras-Madrid-Paris
17. Railway axis Paris-Strasbourg-Stuttgart-Wien-Bratislava
19. High-speed rail interoperability on the Iberian peninsula
20. Fehmarn Belt railway axis
22. Railway axis Athens-Sofia-Rudapest-Wien-Praha-Nürnberg/Dresden
23. Railway axis Gdansk-Warszawa-Bmo/Bratislava-Wien
24. Railway axis Lyon/Genova-Basel-Duisburg-Rotterdam/Antwerpen
26. Railway/road axis Ireland/United Kingdom/continental Europe
27. "Rail Baltica" axis Warszawa-Kaunas-Riga-Tallinn-Helsinki
28. "Eurocaprail" on the Bruxelles/Brussel-Luxembourg-Strasbourg railway axis
29. Railway axis of the Ionian/Adriatic intermodal corridor





Thank you for your attention

I am looking forward to hearing about the
outcome of the FERRMED study

TENT-AGENCY@ec.europa.eu
<http://tentea.ec.europa.eu>

