

Empowered Citizens create Sustainable Cities

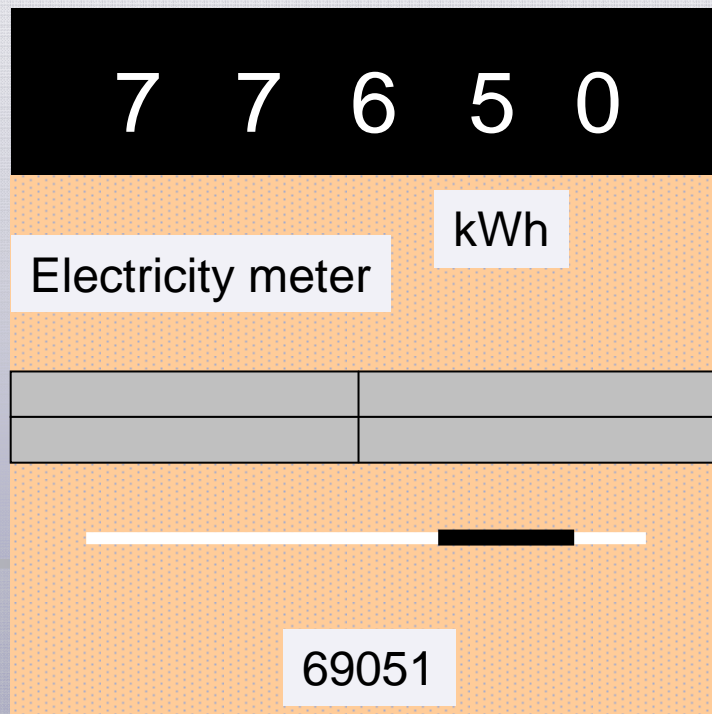
Bordeaux, EESC, 15 June 2010

Wilko Kistemaker

www.c8foundation.nl

www.dutch.com

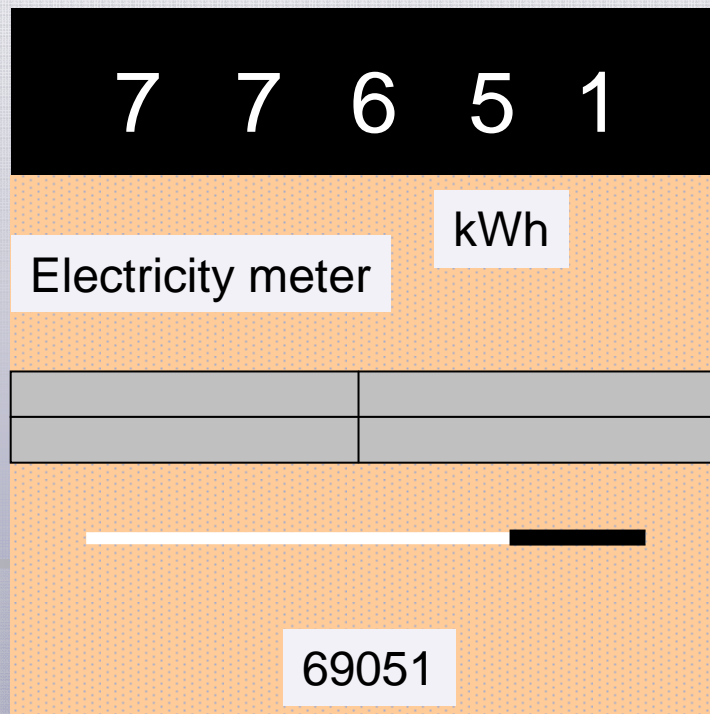
Electricity meter



New energy movement

C8 foundation

Electricity meter



New energy movement

C8 foundation

Electricity meter

7 7 6 5 2

Electricity meter

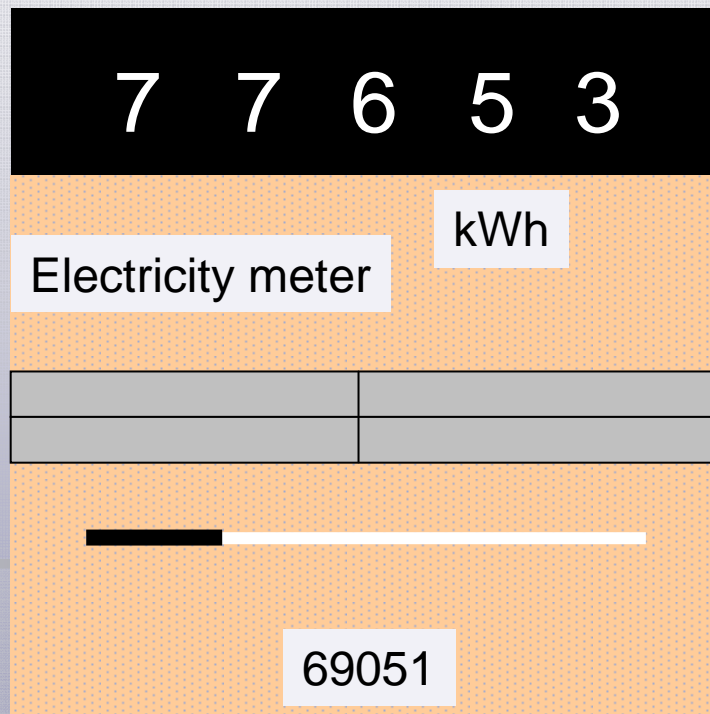
kWh

69051

New energy movement

C8 foundation

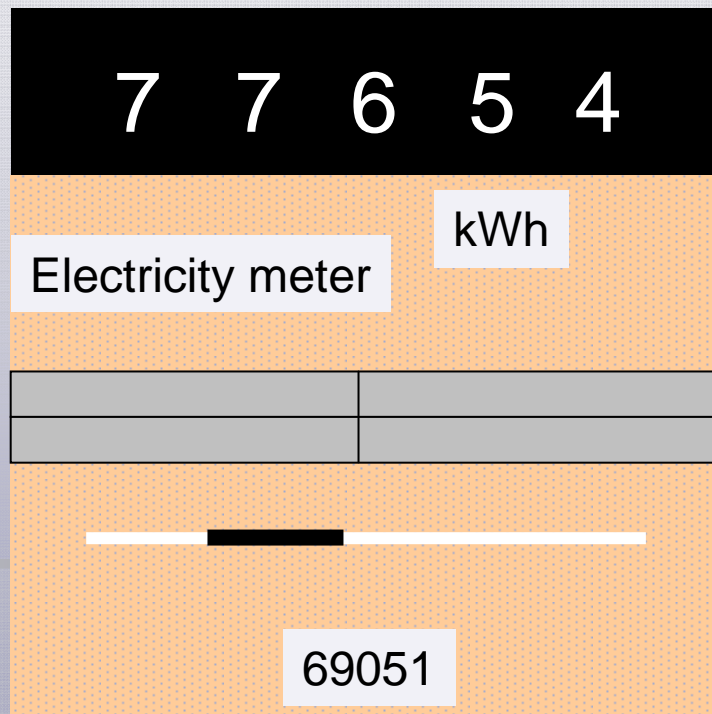
Electricity meter



New energy movement

C8 foundation

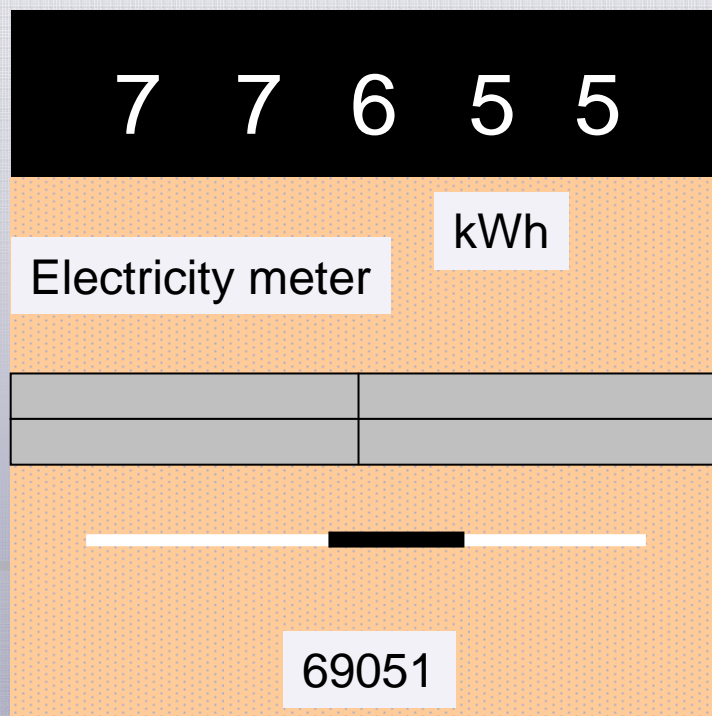
Electricity meter



New energy movement

C8 foundation

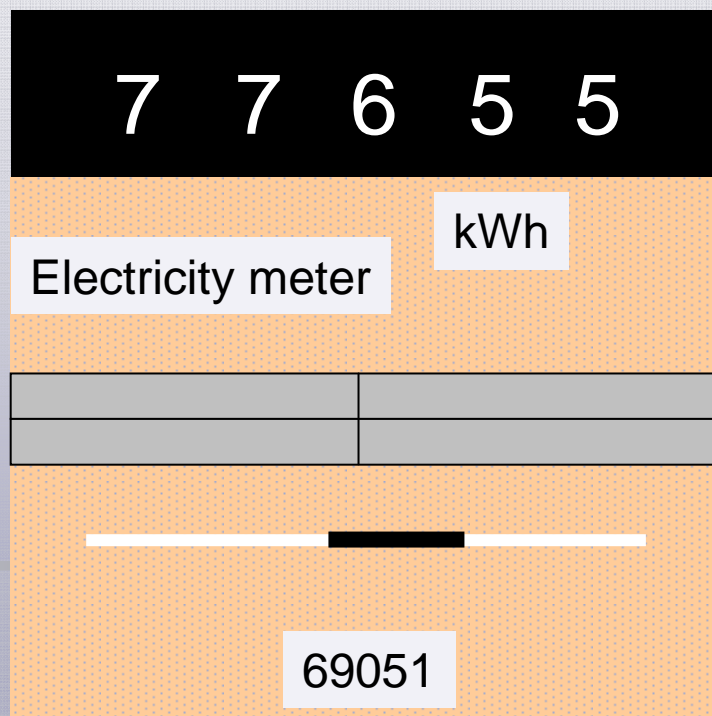
Electricity meter



New energy movement

C8 foundation

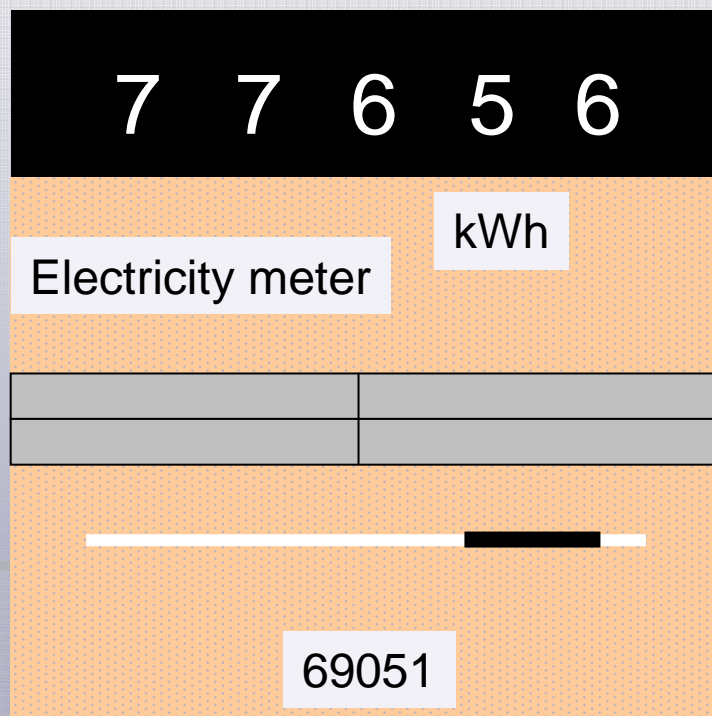
Electricity meter



New energy movement

C8 foundation

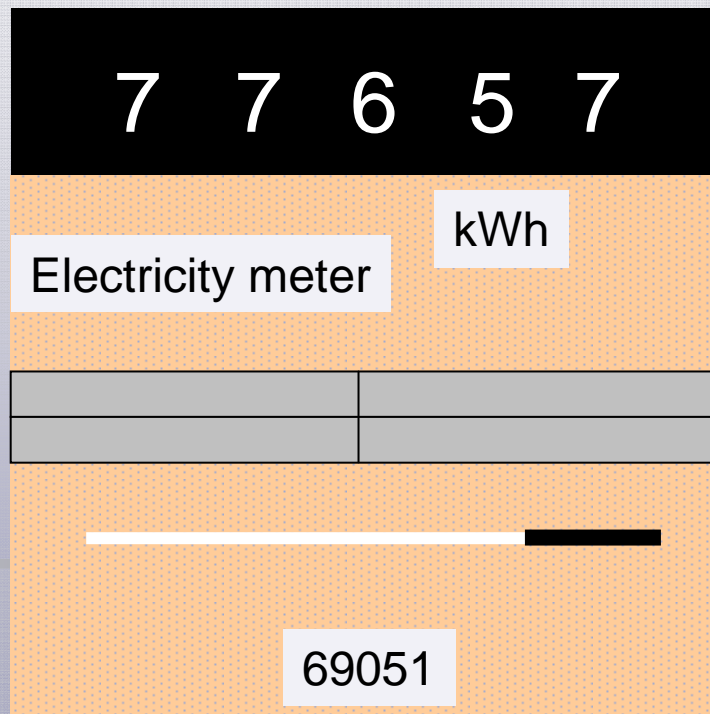
Electricity meter



New energy movement

C8 foundation

Electricity meter



New energy movement

C8 foundation

Electricity meter

7 7 6 5 8

Electricity meter

kWh

69051

New energy movement

C8 foundation

Electricity meter

7 7 6 5 9

Electricity meter

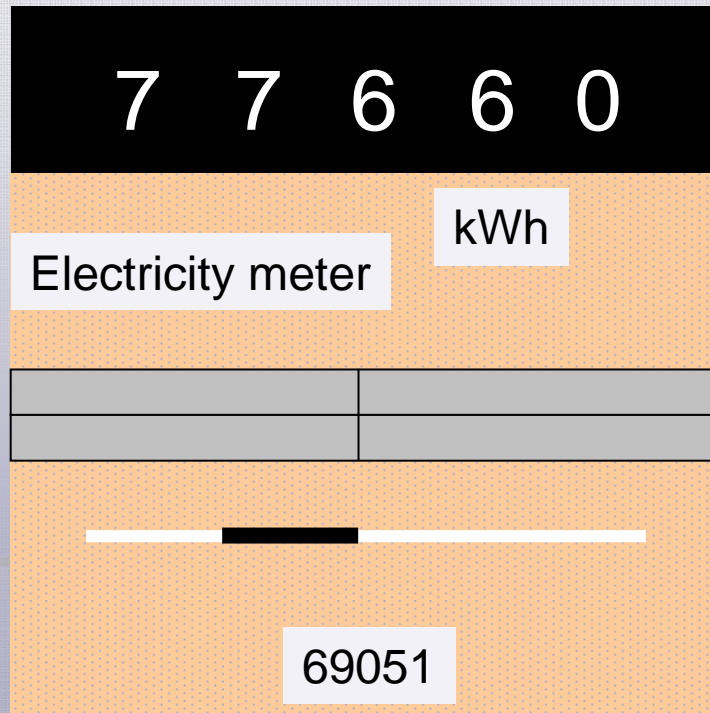
kWh

69051

New energy movement

C8 foundation

Electricity meter



Normally the meter goes up

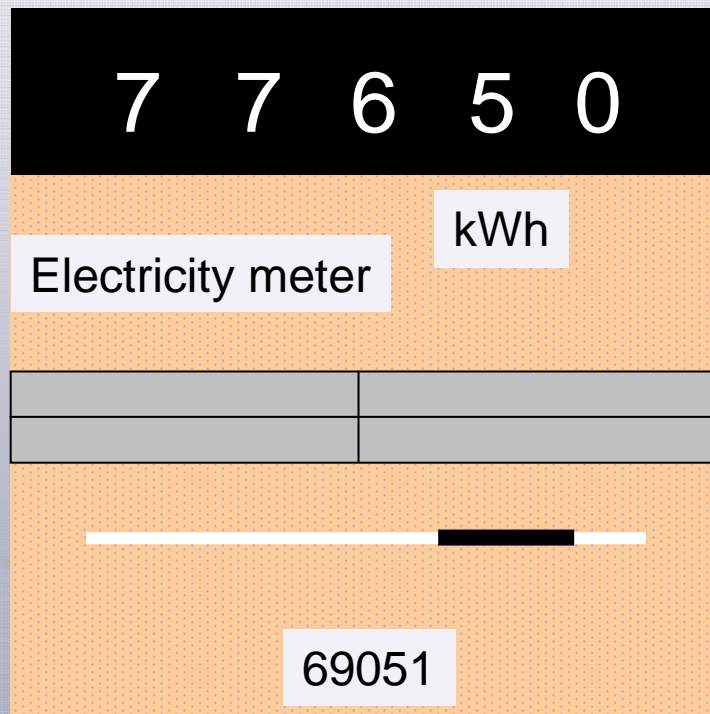
This can be changed

Lets see what happens

New energy movement

C8 foundation

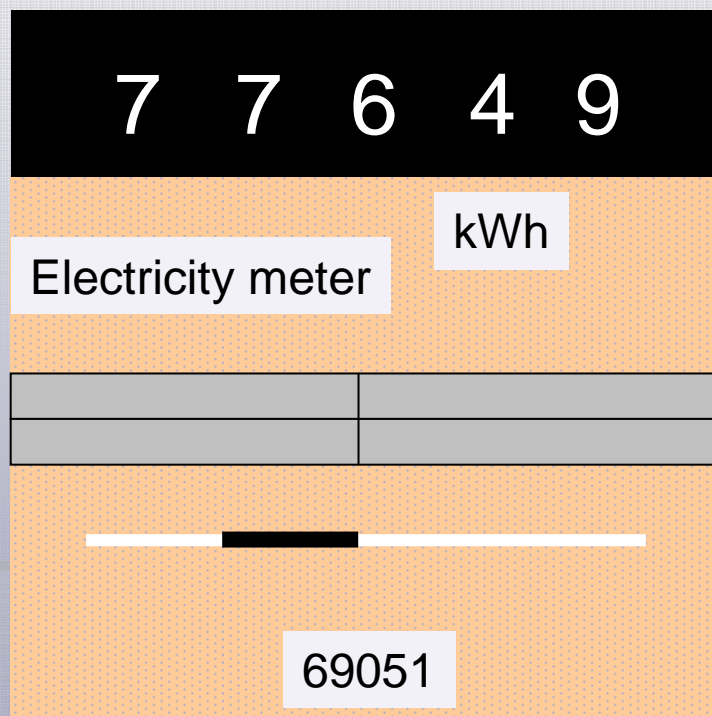
Electricity meter



New energy movement

C8 foundation

Electricity meter



New energy movement

C8 foundation

Electricity meter

7 7 6 4 8

Electricity meter

kWh

69051

New energy movement

C8 foundation

Electricity meter

7 7 6 4 7

Electricity meter

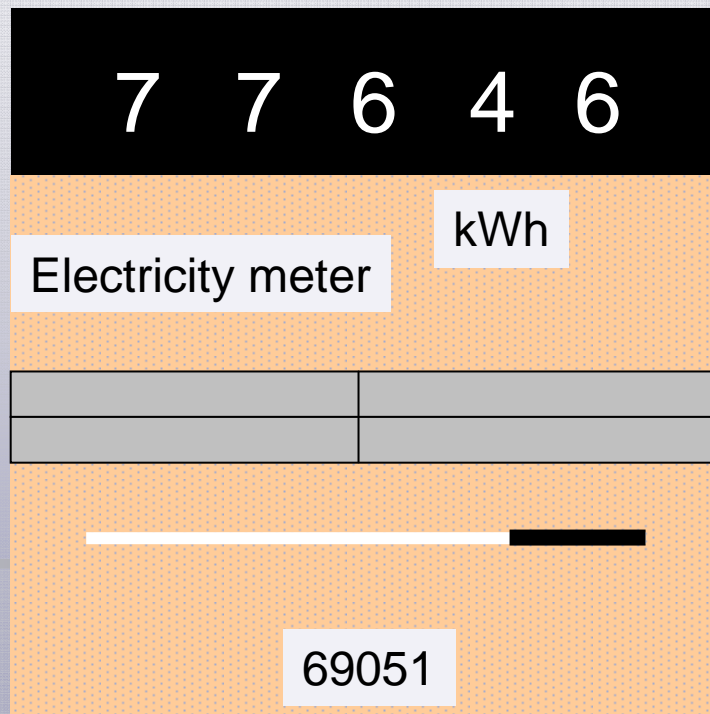
kWh

69051

New energy movement

C8 foundation

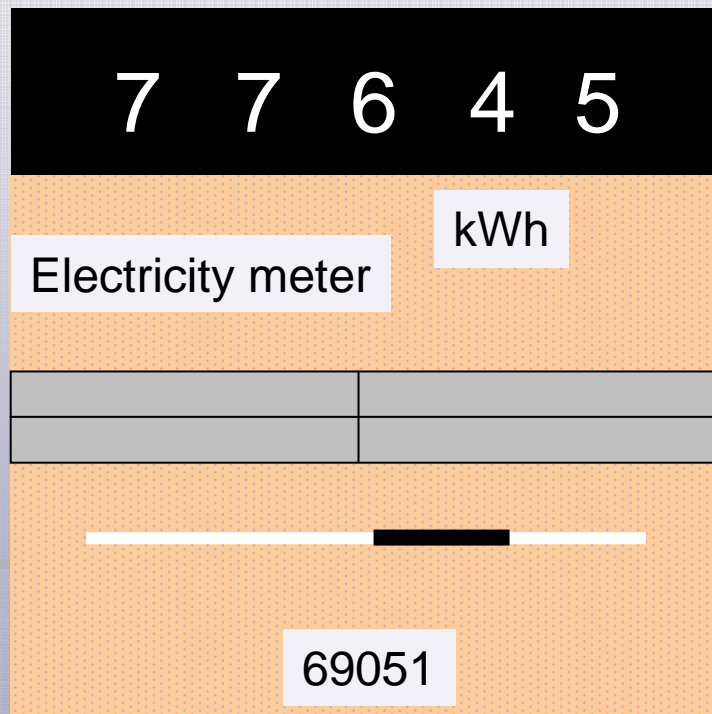
Electricity meter



New energy movement

C8 foundation

Electricity meter



New energy movement

C8 foundation

Electricity meter

7 7 6 4 0

Electricity meter

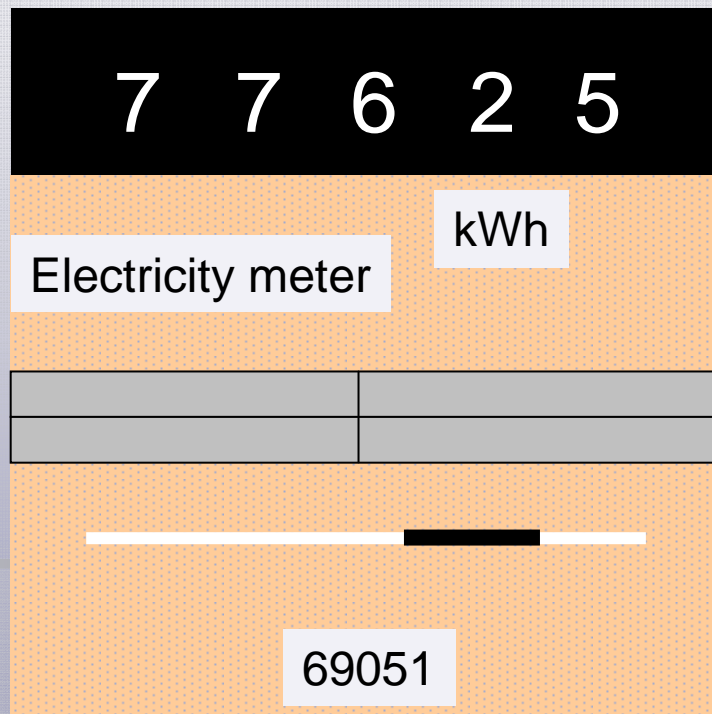
kWh

69051

New energy movement

C8 foundation

Electricity meter



New energy movement

C8 foundation

Electricity meter

7 7 6 1 0

Electricity meter

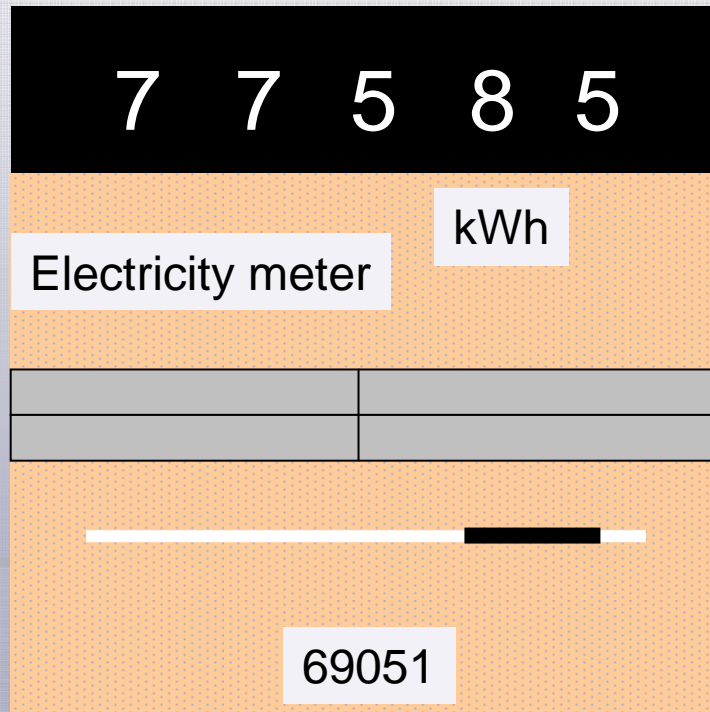
kWh

69051

New energy movement

C8 foundation

Electricity meter



Consumer has turned into prosumer

Delivers back to the net

New energy movement

C8 foundation

Produce Renewable Energy

- Lower or no more energy bills
- Produce your own electricity for your electric car

Specificatie Eindafrekening

Klantennummer: 11303010
Datum: 05 mei 2006
Rekening: 000000001
Contractnummer: 000000001
periode: 01 jan '06 - 30 apr '06

1 Administratieve kosten

State bijdrage termijnenfacturen 1.83,00 € 1,00
Totaal € 1,00

2 In rekening gestelde termijnenafreken. Omv. BTW

apr '06 € 23,95 mei '06 € 23,95 jun '06 € 23,95
Totaal BTW € 71,85

3 BTW voor ondernemers

BTW nummer	BTW 1%	BTW 6%	BTW 12%	Totaal BTW
A.v. Raaij Customer Care C	€ 5,00			€ 5,00
RAAIJ/1131816	€ 20,19	€ 0,19		€ 20,38
A.v. Raaij Energie	€ 20,17			€ 20,17
RAAIJ/1131816	€ 25,23	€ 0,23		€ 25,46
R.v. Ondernemers Kwaliteit	€ 12,20		€ 0,56	€ 12,76
RAAIJ/1131816			€ 12,11	€ 12,11
Totaal BTW				€ 75,91
BTW in rekening afrekenen				€ 75,91
BTW saldo				€ 0,00

4 Inzicht in uw verbruik

Periode	Gepland verbruik	Daadwerkelijk verbruik
01 jan 2006 - 30 sep 2006	2000 kWh	1111 kWh
01 okt 2006 - 30 apr 2007	2000 kWh	523 kWh

5 Aanpak van de afrekening

De huidige afrekening is afgeleverd op 11 mei 2006.
De huidige afrekening is afgeleverd op 11 mei 2006.
De huidige afrekening is afgeleverd op 11 mei 2006.



New energy movement

C8 foundation

Sustainability



New energy movement

C8 foundation

Renewable energy projects



C8 foundation

C8 Foundation

- Accelerate transition to green energy
- Through
 - Local green energy projects
 - Innovative small scale technology
 - Tailormade & Best practices
 - Active citizens in control

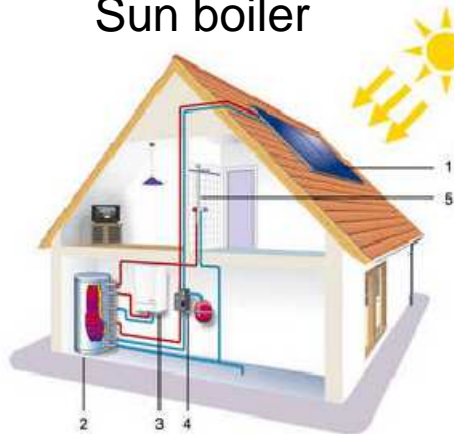
New energy movement

C8 foundation

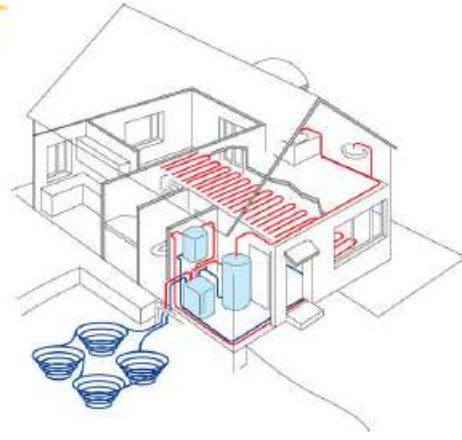
Existing houses



Sun boiler



Warmth exchange



- 40 houses, 8 years old
- 2 schools
- > 70 % CO2 reduction



Image © 2009 Aerodata International Surveys

© 2009 Tele-Atlas

53°12'07.84" N 6°34'29.09" O

verh. 6 m

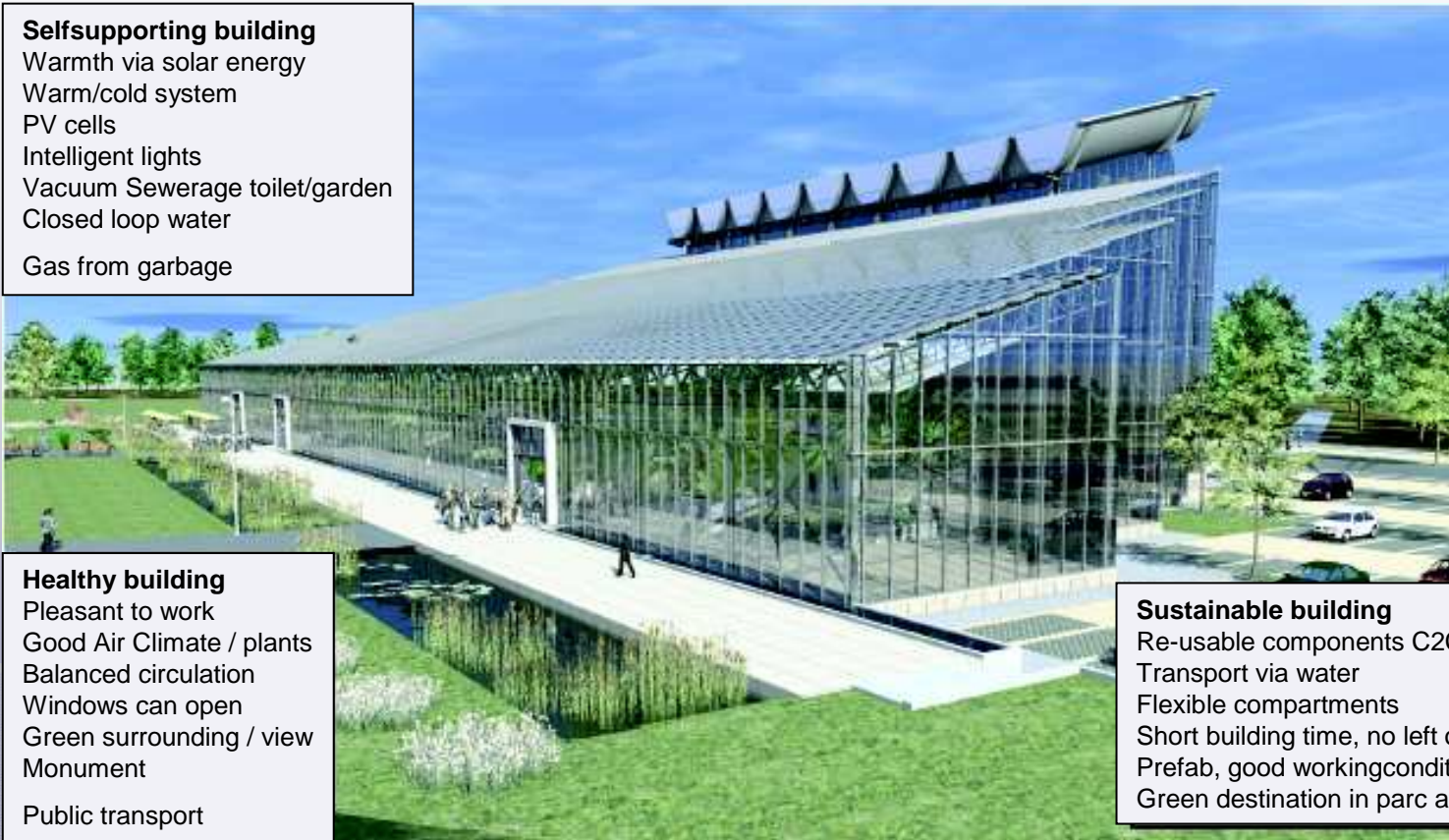
2005 Ooghoopte 345 m

Google

New houses: Villa Flora

Selfsupporting building

- Warmth via solar energy
- Warm/cold system
- PV cells
- Intelligent lights
- Vacuum Sewerage toilet/garden
- Closed loop water
- Gas from garbage



Healthy building

- Pleasant to work
- Good Air Climate / plants
- Balanced circulation
- Windows can open
- Green surrounding / view
- Monument
- Public transport

Sustainable building

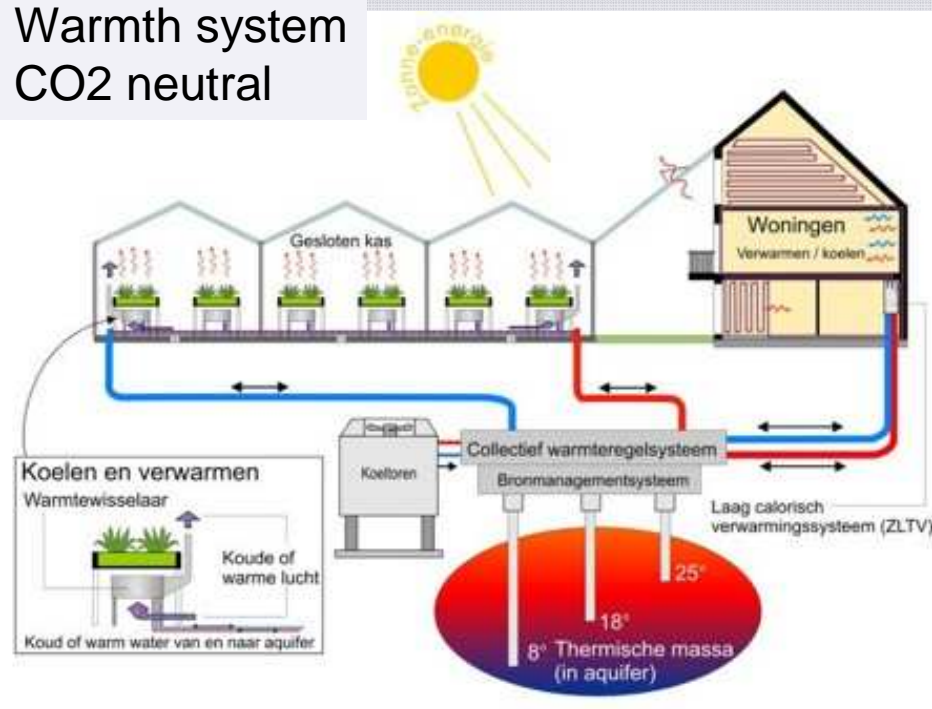
- Re-usable components C2C
- Transport via water
- Flexible compartments
- Short building time, no left overs,
- Prefab, good working conditions
- Green destination in parc after Floriade

New energy movement

C8 foundation

New houses: energy neutral

Warmth system
CO2 neutral



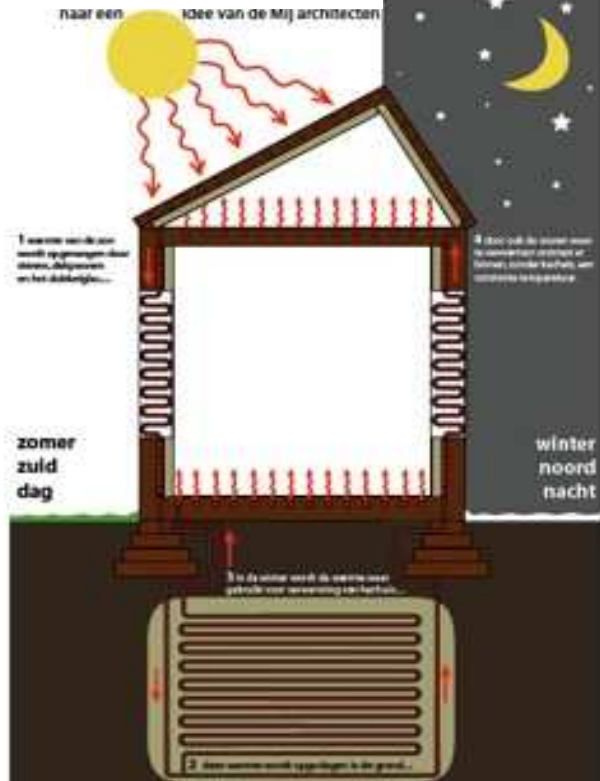
New energy movement

C8 foundation

Older houses: almost energy neutral

House with smart skin

Warm building



Figuur 6 zonneboilersysteem



Figuur 7 warmtepompsysteem

New energy movement

C8 foundation

6 step approach

- Find hot spots
- Get together / Kick off participants
- Tailor made solution, proposals, decision
- Realisation step by step
- Make successful example
- Start new initiatives

New energy movement

C8 foundation

Next step



Choose a city
in your country
Start a
prosumer initiative
Mail before 1 July
2010 to:
w.kistemaker@dutch.com

New energy movement

C8 foundation