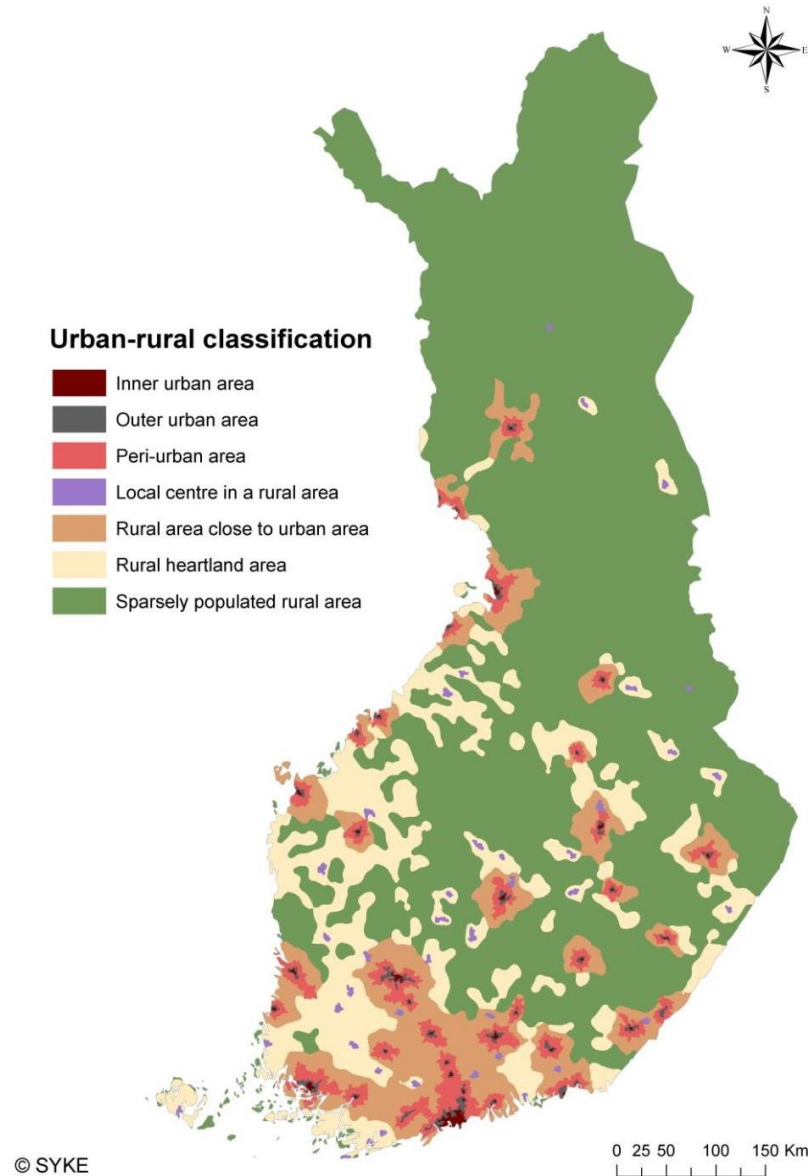


THE MOST RURAL COUNTRY OF THE EU

- Population density 18 people/km² (ranking 201st in the world)
- In Punavuori, Helsinki 20 000/km² vs. 0.17/km² in Savukoski, Lapland
- TOP5 export products in 2017 by value: diesel oil, paper, cars, sheet metal, sawn wood
- 340 000 jobs in the food producing chain, tourism fastest growing business with 140 000 jobs
- 50% live in rural areas as defined by LEADER, 80% want to keep our countryside viable



**Suomen Kylät
Finlands Byar**

FINNISH VILLAGE MOVEMENT ASSOC.

A national umbrella and advocacy organisation for community-led local development (CLLD), community well-being and public participation.

4000 village development associations (vs. 450 in 1995)

54 LEADER LAGs

19 regional village movement associations and village development coordinators

→ 90 million euros worth of voluntary work for rural development in 2017

→ hundreds of new rural businesses, jobs, services and infrastructure projects every year



Suomen Kylät
Finlands Byar

We call for EU and national governments for...

**European
Rural Parliament**



1. Closer and open connection to European Rural Citizens

- Good dialogue and information exchange between EU, European rural citizens and NGO's for better policies and development programs
- Future EU policies to be policies for all of the EU people and areas, also to enable increasing awareness and support for the EU from rural areas.
- Europe is more than just EU - funds permitting easier exchange and cooperation between EU and non-EU actors on capacity building, networking and partnership
- An accelerated progress of accession or formal support for the countries of South East Europe, with strengthened programs of rural development including LEADER.



**Suomen Kylät
Finlands Byar**

2. Supportive policies and funds for villages and rural citizens

- A real policy and programme for local rural development and villages - giving real opportunities for **place-based** actions and -policy
- A smart villages and small towns policy in a bottom-up spirit with adequate and simplified implementation tools, prepared in partnership with grass-roots actors.
- The role of LEADER, national rural citizens' NGOs and National Rural Parliaments could be re-thought as crucial links between government support systems and citizen-led local development
- Ensuring continuation and possible extension of the LEADER/CLLD in the upcoming programming period including a minimum earmarking across the different funds for CLLD, and with adequate transition mechanism between the current and the next programming period.
- Enabling a simplified procedure for LEADER/CLLD using a common framework, a “common basket” and one lead-fund.
- Continued regional and rural development programmes considering the risk of excluding non-agricultural rural development from the future CAP.
- Recognize a clear trend towards multi-location living, in both urban and rural areas, and integrate this into policy and funding delivery



3. To meet existential challenges and exodus

- Increased investment in measures to combat climate change and to mitigate its impact on rural regions, and to realise the strong contribution which rural areas can make to promote eco-economies
- We welcome any action or programme where communities are given the opportunities to participate in climate and environmental actions.
- Ensuring public funding for broadband network extension in the 2021-27 period to deliver modern, fast digital infrastructure access across rural Europe, essential for rural services, business and 5G.
- Increased focus on the needs of young people in rural areas
- Pursue efforts in social inclusion issues in rural areas, especially taking into account the issues caused by aging and gender problems.



**Suomen Kylät
Finlands Byar**

Thanks!

@petri_rinne
petri.rinne@suomenkylat.fi

@suomenkylat
suomenkylat.fi
facebook.com/suomenkylat



Suomen Kylät
Finlands Byar

