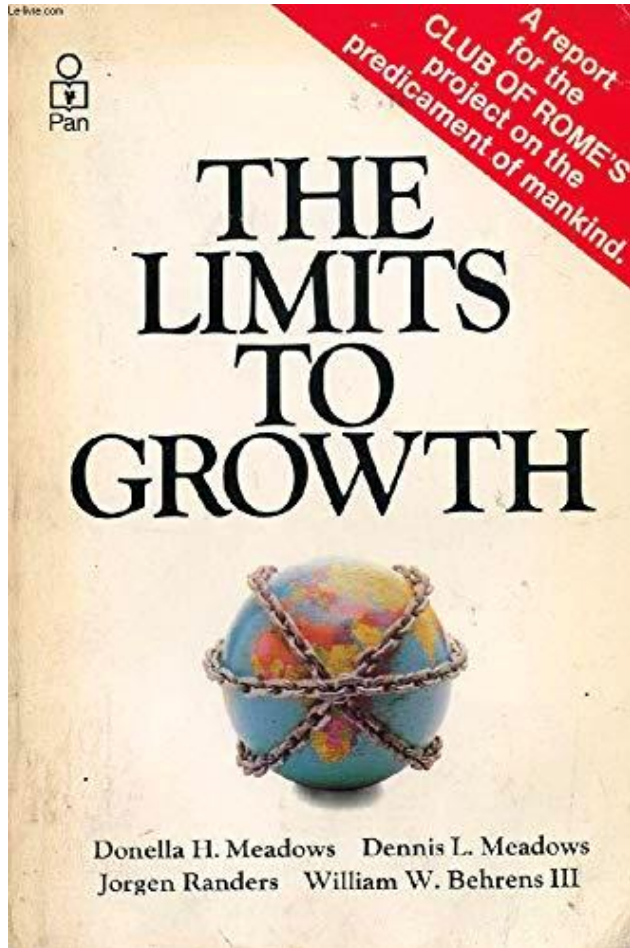




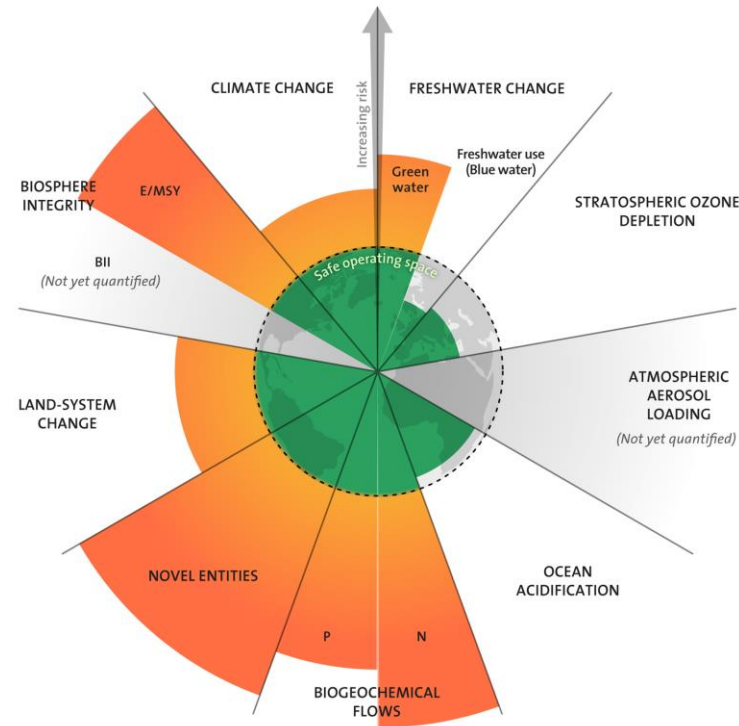
The European Green Deal: enhancing the resilience of EU society to face future shocks and contribute to a healthy planet

Owen Gaffney, Stockholm Resilience Centre, Potsdam
Institute for Climate Impact Research

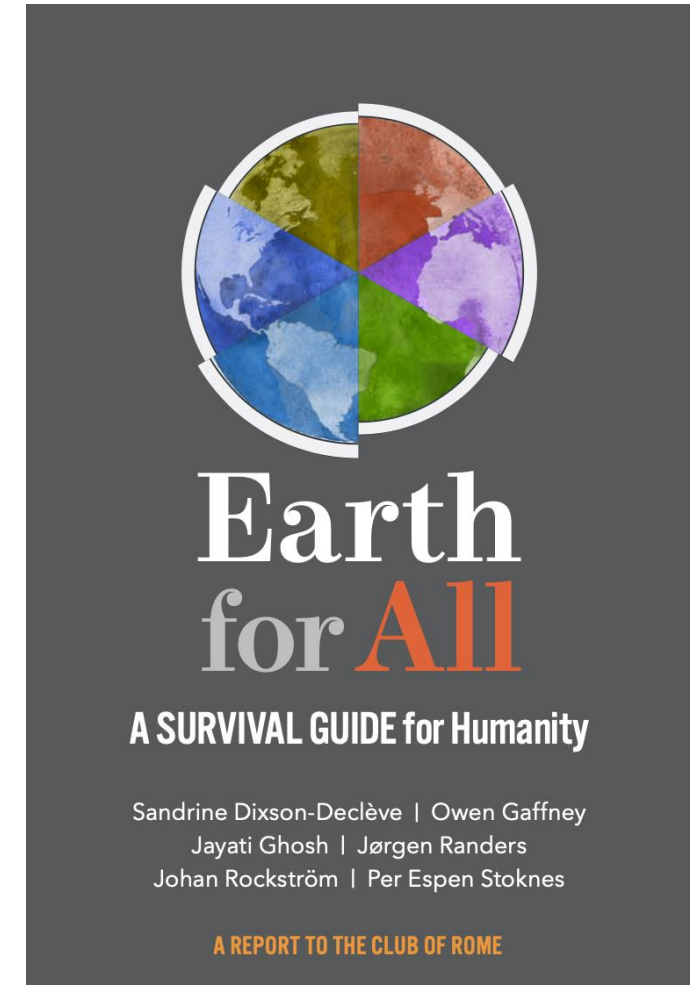
24 May 2022



1972



2009



2022

3/29/2022



Garry Jacobs

CEO, World Academy of Art & Science



Jane Kabubo-Mariara

President of the African Society for Ecological Economists



Steve Keen

Professor of Economics, Honorary Professor, University College London



Julia Kim

Program Director, Gross National Happiness Centre, Bhutan



Roman Krznaric

Public philosopher and author
Photo © Kate Raworth



David Korten

Author, lecturer, political activist



Hunter Lovins

President, Natural Capital Solutions
Photo © Norm Clasen



Chandran Nair

Founder and CEO, The Global Institute for Tomorrow



Sunita Narain

Environmentalist and political activist; Director General at Centre for Science and Environment



Carlota Perez

Professor at the Institute for Innovation and Public Purpose, University College London (UCL)
Photo © Stuart Robinson



Janez Potočnik

Co-chair of the UN International Resource Panel

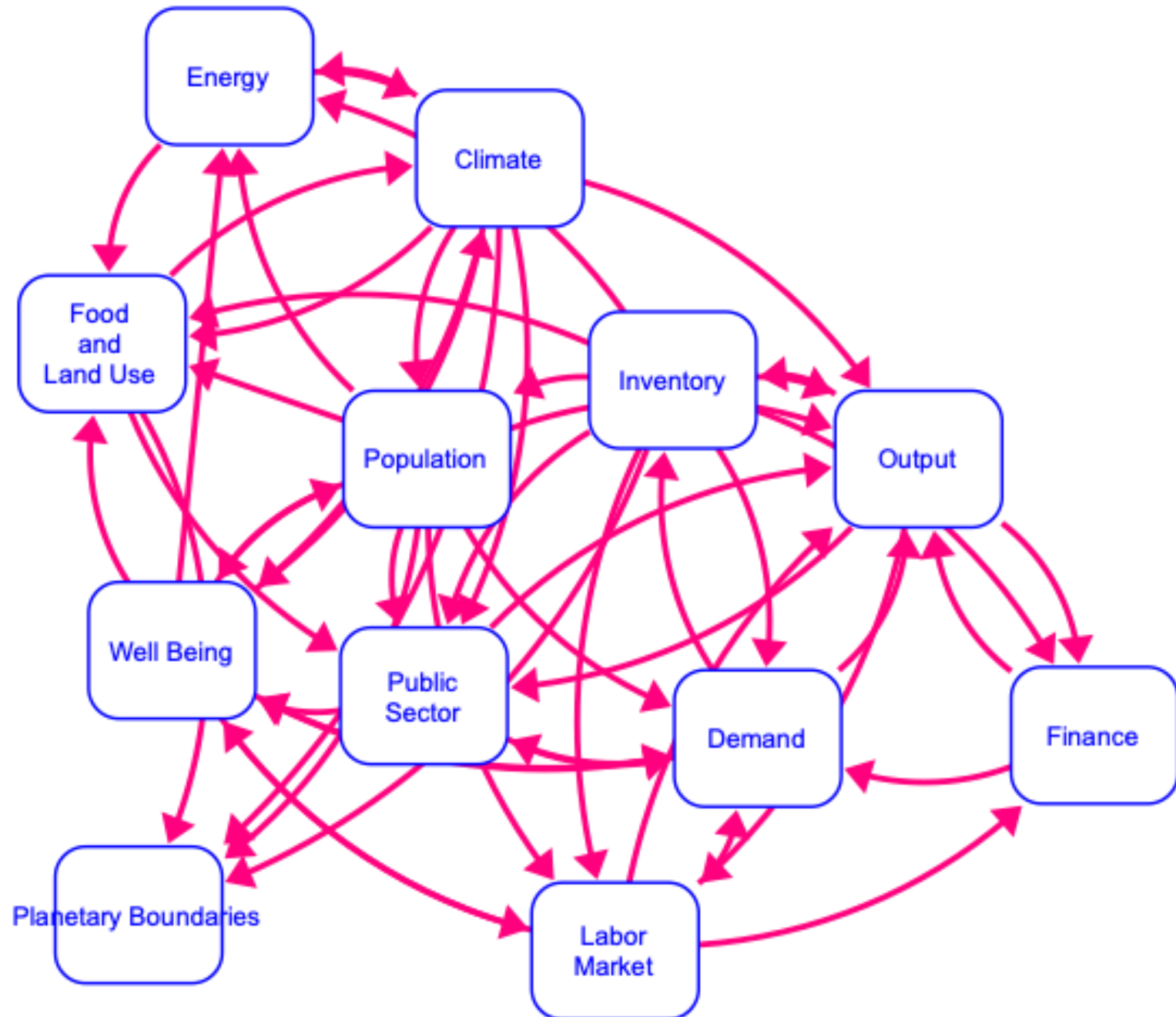


Kate Pickett

Professor of Epidemiology, University of York

6 novelties in the Earth4All system dynamics model

1. *Ecology*: Impact of economy on main planetary boundaries (climate, nutrients, forests, biodiversity), impact of boundaries on economic development
2. *Public sector*: active public sector with public infrastructure capacity, welfare policies and an active climate-change mitigation policy stance
3. *Finance*: effects from debt and money supply, central bank interest rates and corporate capital costs
4. *Labour*: simulates recurrent 10-year unemployment cycle and macroeconomic consequences
5. *Population*: model has endogenous population dynamics affected by investment levels in public spending, education and income levels
6. *Inequality and Wellbeing*: integrates a Well-Being index, and Social Tension Index (as a function of GDPpp, unemployment, income inequality, debt burden, government services, local/regional pollution, perceived global warming)



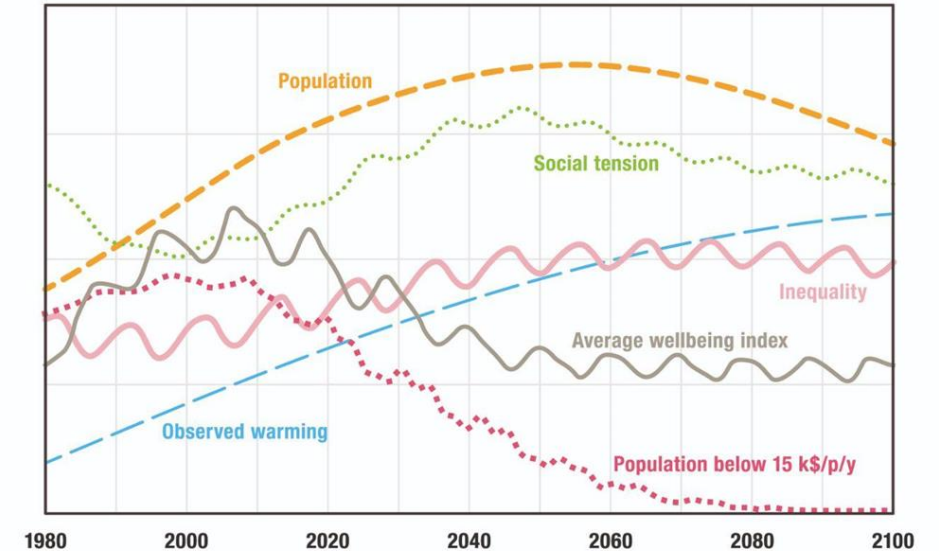
Too Little, Too Late

Poverty reaches zero around 2100.

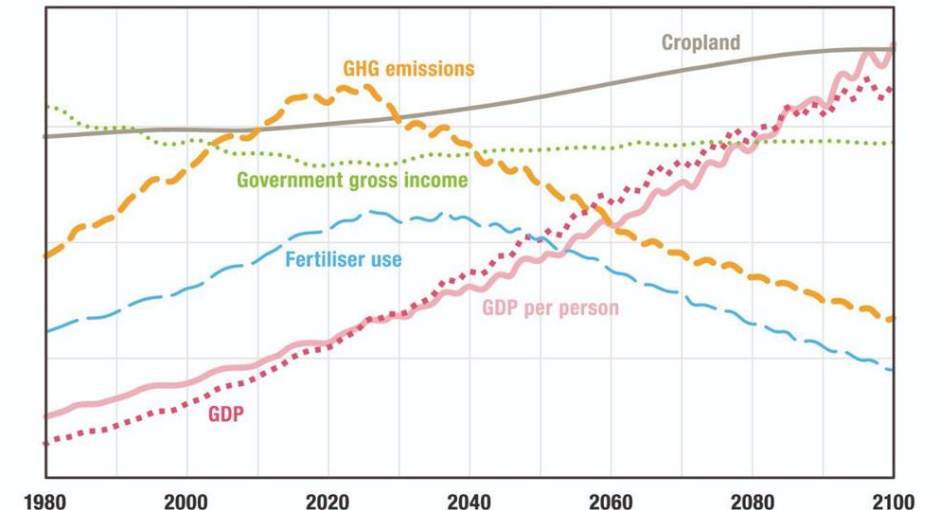
Social tensions rise this century, conversely wellbeing falls.

Global average temperature: a catastrophic 2.5°C rise

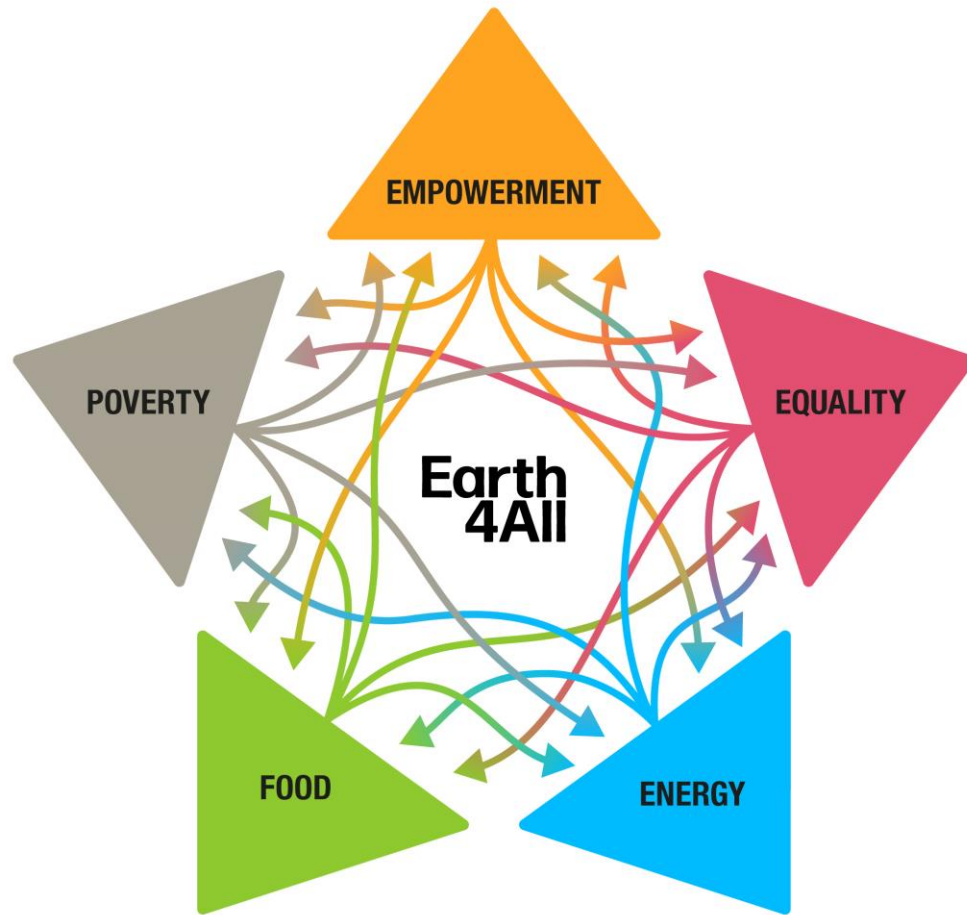
1. Main trends Too little too late scenario



2. Human footprint Too little too late scenario



KEY RECOMMENDATION



LLY

The world needs five extraordinary turnarounds to reverse the trend in declining wellbeing and to remain within planetary boundaries.

Visit www.earth4all.life to learn more.



FIVE global turnarounds are needed

- 1 Transform and accelerate human development IN LOW-INCOME COUNTRIES by reforming the international financial and trade system.
- 2 Transform WEALTH DISTRIBUTION by ensuring the wealthiest 10% have no more than 40% of national income.
- 3 Transform ENERGY SYSTEMS to halve emissions of greenhouse gases every decade.
- 4 Transform agriculture. The FOOD SYSTEM must become regenerative and nature positive.
- 5 Transform gender power imbalances. EMPOWER WOMEN and invest in education for all.

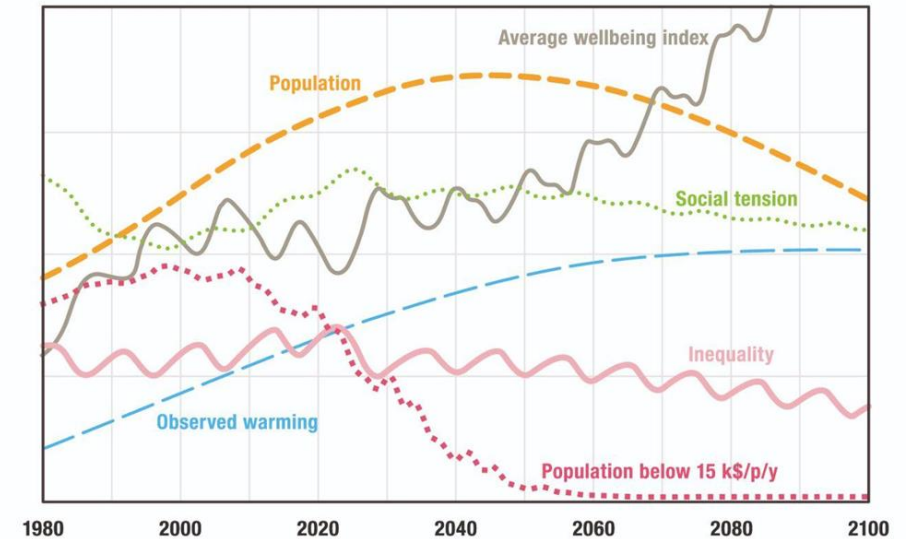
Giant Leap

Poverty reaches zero around 2050
(USD 15k pppy).

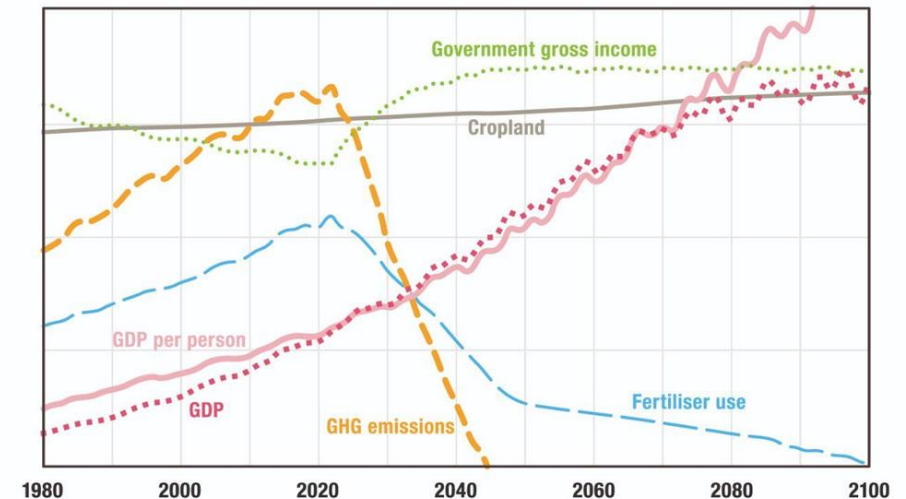
Wellbeing rises.

Temperature stabilises at below
2°C

1. Main trends
Giant leap scenario



2. Human footprint
Giant leap scenario



Citizens' Assembly





The European Green Deal: enhancing the resilience of EU society to face future shocks and contribute to a healthy planet

Owen Gaffney, Stockholm Resilience Centre, Potsdam
Institute for Climate Impact Research

24 May 2022