



European Economic and Social Committee

TEN Section

Section for Agriculture, Rural Development and the Environment

www.eesc.europa.eu/ten
ten@eesc.europa.eu
[@EESC_TEN](https://twitter.com/EESC_TEN)



Policy areas:

- Energy
- Transport
- Infrastructures
- Telecommunication
- Space
- EURATOM

Permanent bodies:

- Permanent Group on Services of General Interest
- Permanent Group on Energy
- Permanent Group on Transport



check us online!

Who does what?

Horizontal team



BEATRIZ PORRES
Head of unit



Mary BOGDI
• Assistant to the HoU
• TEN Section & Bureau meetings



Baiba SPUNDE
• Assistant
• Financial manager

Administrators



Agota BAZSIK
• Energy
• PG on SGI



Giorgia BORDIGNON
• PG on Energy



Francesco NAPOLITANO
• Energy



Antonio RIBEIRO PEREIRA
• Transport
• PG on Transport



Maja RADMAN
• Transport
• Communication
• Data Protection

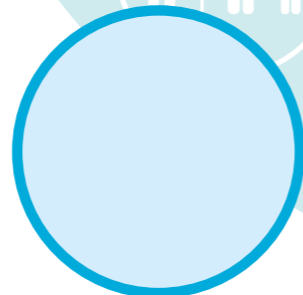


Aleksandra SARMAN GRILC
• Transport

Assistants



Alessandro RIZZI
• Telecommunication
• Space



New AD



Daniel MAKAY
• Assistant
• Financial manager



Vicentzia NEAGU
• Assistant



Virginie ANDRE
• Assistant



Maria Grazia RUOCCO
• Assistant