

Upward convergence through the European Care Strategy

Kinga Joó, member of the EESC and International
Advisor at the Hungarian National Association of
Large Families (NOE)

European Care Strategy

Early Childhood Education and Care (ECEC)

- Any regulated arrangement that provides education and care for children from birth to compulsory primary school age
- Barcelona Targets

Long Term Care (LTC)

- Services and supports for people who require assistance in the activities of daily living for an extended period of time
- National Action Plans without targets

Upward Convergence in Care: Available, accessible and affordable (COMM) + inclusive, sustainable and human rights-based (EESC)

Opportunities

- ECEC targets supported by EU funding and other EU policies
- Interrelationship bw informal carers and professional care workers
- Social economy providers in LTC

Challenges

- National specificities and regional imbalances
- Gender inequalities
- „Care drain”
- Personal/family choices
- Prevalance of informal and unpaid care in LTC

Convergence in Paternity Leave among EU MSs as a result of the Work-Life Balance Directive

	Before 2019
No paternity leave	DE, LU, AT, CY, CZ, HR, SK, IE
Less than 2 weeks	NL, RO, MT, IT, EL, HU
2 weeks or more	PT, SE, SI, BE, ES, LV, FR, FI, LT, DK, EE, PL, BG

Paternity leave

Number of weeks	Payment
BG ■ 2	90 %
HR* ■ 2	100 %
CY ■ 2	72 %
CZ ■ 2	70 %
DK ■ 2	Variable
DE* ■ 2	N/A
EL ■ 2	100 %
HU* ■ 2	100 %
IE* ■ 2	● Flat rate
IT ■ 2	100 %
LV* ■ 2	80 %
LU ■ 2	▼ Variable
MT* ■ 2	100 %
PL ■ 2	100 %
RO* ■ 2	100 %
SK* ■ 2	★ Flat rate
SE ■ 2	78 %
AT ■ 4	▲ Flat rate
BE* ■ 4	◆ Variable
EE ■ 4	100 %
FR ■ 4	100 %
LT ■ 4	78 %
SI ■ 4	100 %
NL ■ 7	100 %
PT* ■ 9	100 %
ES ■ 16	100 %
FI* ■ 19	Variable

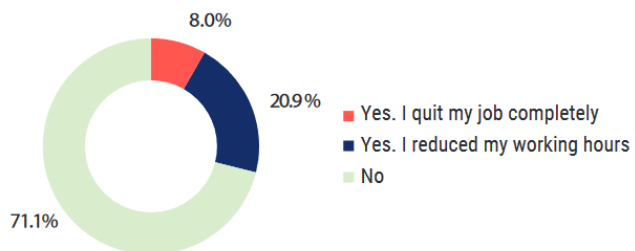
Current EU legislation

2 weeks minimum

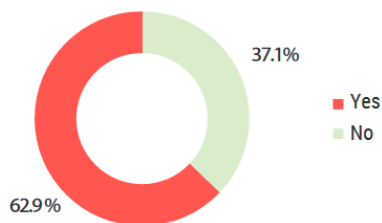
* See additional information overleaf

Unpaid care penalty?

Did you ever give up paid work in order to provide regular help and LTC to someone close to you?



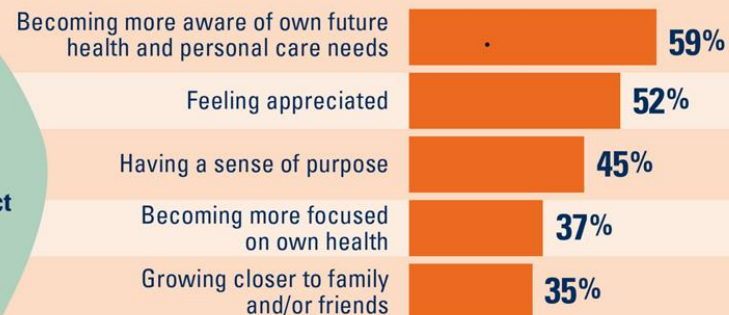
Did you ever feel you had to provide care to someone close to you despite a negative effect on your wellbeing?



Positive aspects of helping older adults

AMONG ADULTS AGE 50–80

96%
reported at
least one
positive aspect
of helping



Good practices in LTC solutions

SLOVAKIA – community-based assistance w professional supervision



**HUNGARY – „care watch”
24h assistance at the touch of
a button**



Conclusions & Recommendations

- Encouraging MS investment in professional public home-based care services available for all
- Quality standards for the LTC sector that are binding for all providers, regardless of their legal status
- Mapping of the realities and needs of informal carers for (more) recognition and formalisation

