

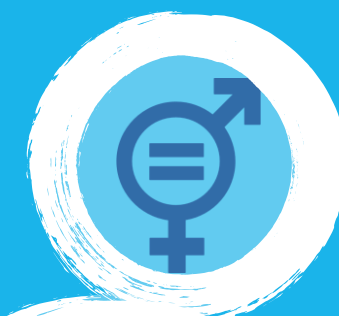


**Study:**

# **Gender-disaggregated data on energy poverty**

**Insights for energy  
affordability and inclusion**

**Katharina Habersbrunner  
Brussels, 26<sup>th</sup> June 2024**



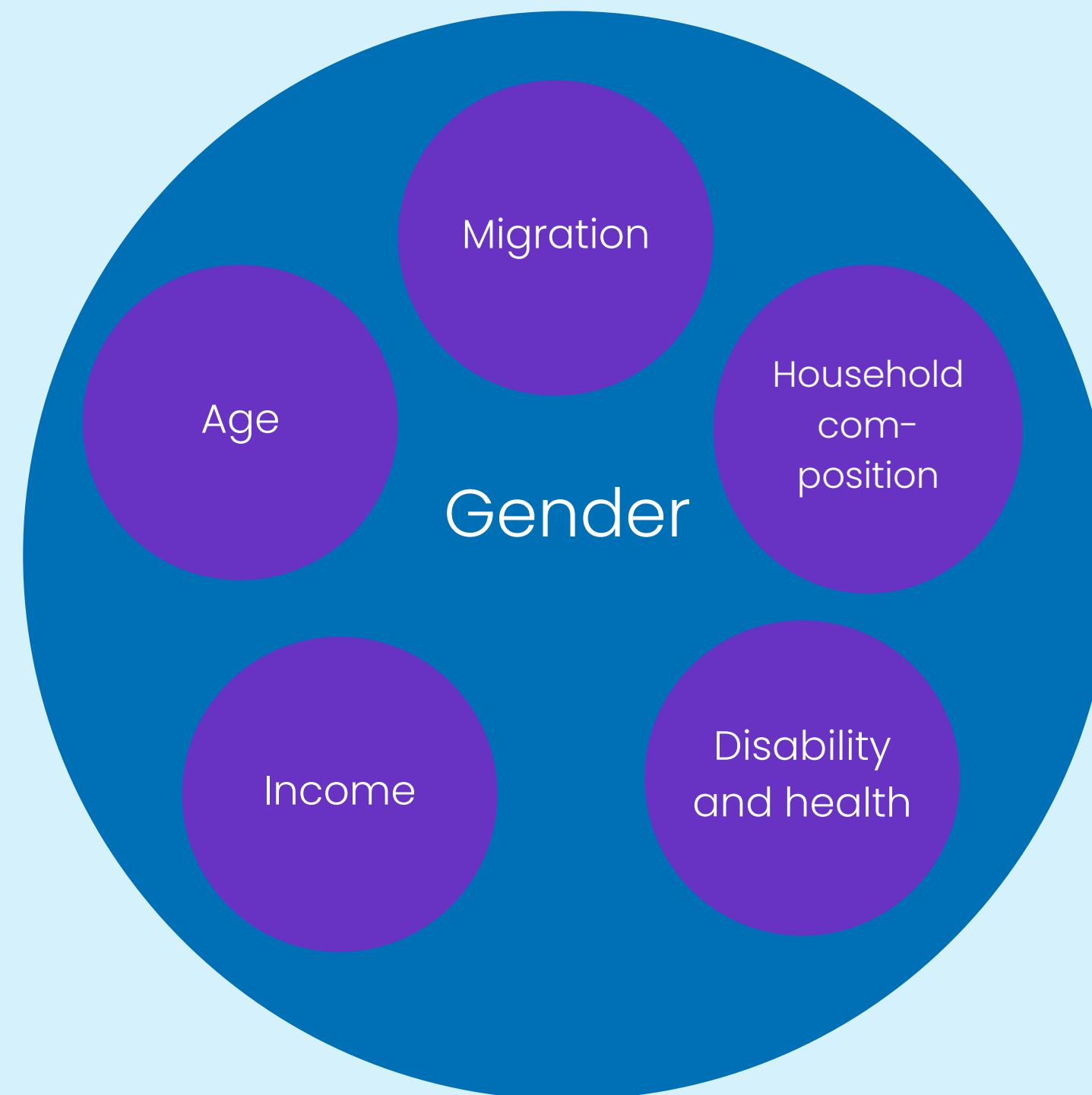
# Study: Gender-disaggregated data on energy poverty

- Identifying possible gendered factors that have an impact on people at risk or living in energy poverty (EP)
- Analysing the factors that contribute to a higher share of women, girls and gender diverse people being affected by energy poverty
- Tracking existing gender sensitive legislation and measures to tackle energy poverty
- Tracking existing societal awareness and knowledge networks dealing with energy poverty and gender
- Identifying best practices, policy gaps and formulating gender-responsive policy recommendations
- Geographical scope: Bulgaria, Cyprus, Croatia, Germany, Ireland, Lithuania, Spain



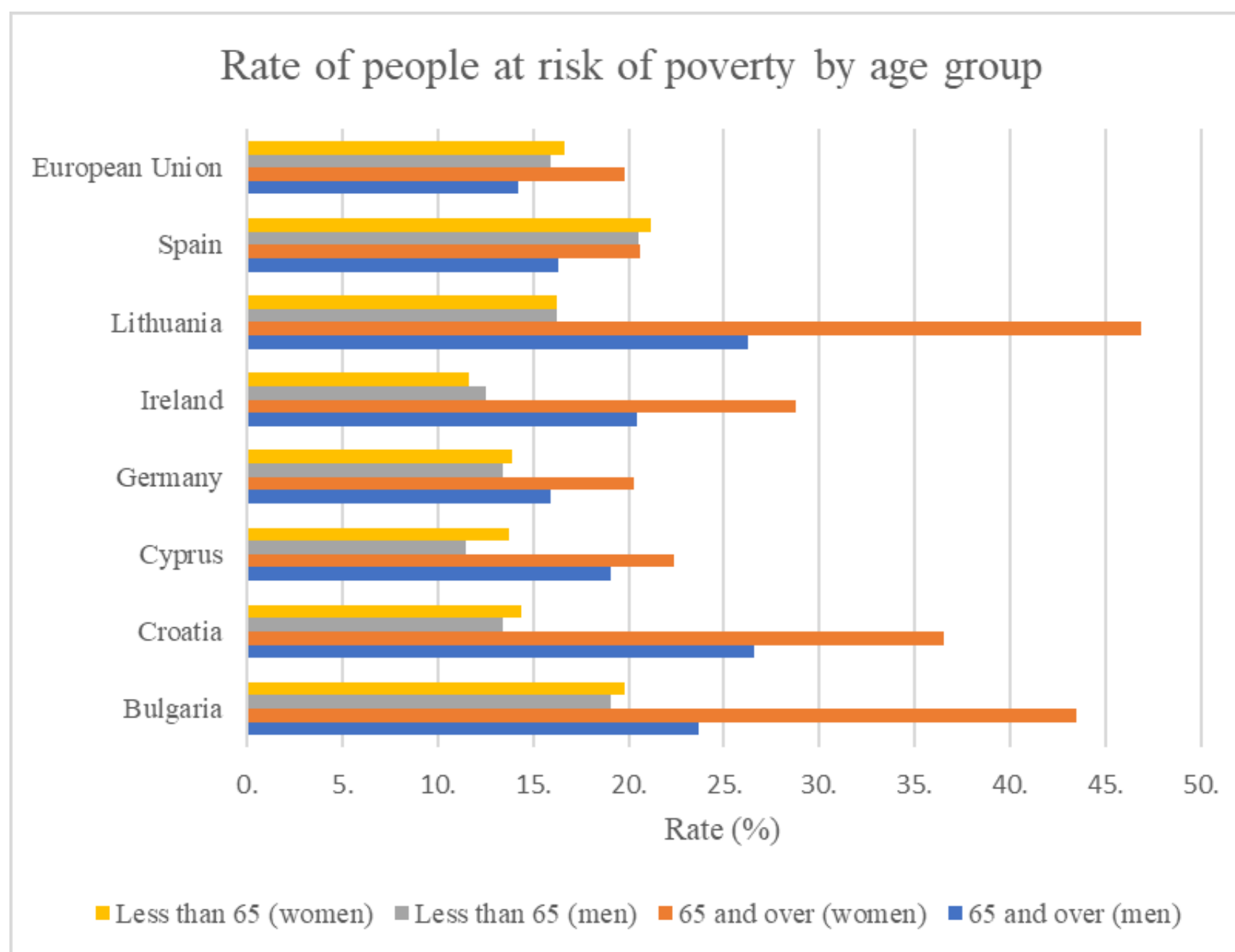
# Factors contributing to the gender-energy poverty nexus

Structural inequalities in the distribution of income, in access to resources and in representation lead to a higher risk of living in energy poverty for structurally excluded groups.



# Gender and the risk of energy poverty

## 1. The intersection of age, gender and income disparity



Source: (WECF based on Eurostat, 2024)

Combination of

- lower income (and limited access to social protection),
- higher life expectancy
- greater likelihood of living alone
- heading a household

⇒ makes older women more likely to live in energy poverty.

In the selected countries, (except for Ireland and Germany), women over 65 are more likely to be unable to keep their homes adequately warm in winter.

# Gender and the risk of energy poverty

---

- 2. Household structure: single-parent households**
- 3. Housing quality and socio-demographic factors**
- 4. Health status and dis/ability**
- 5. Hidden struggles: unexplored groups at risk**

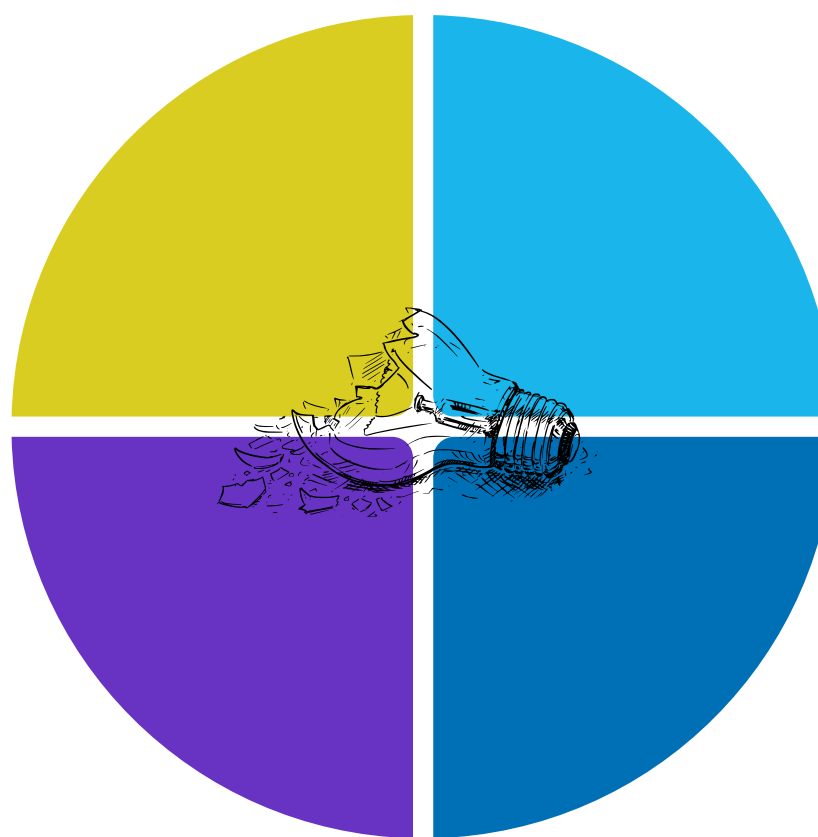
# The gender differential impacts of energy poverty

## Differential health impacts of energy poverty

- women living in winter and summer EP suffer more extensively from respiratory and cardiovascular diseases while men living in EP have higher incidence of home injuries and poor mental health (Oliveras et al., 2020).

## Hindered impacts: domestic violence

- observed complex interplays of power dynamics within households, resulting in forms of domestic abuse in which withholding access to energy amenities, such as heating or cooling, becomes a potent means of asserting control.



## Gender norms and roles shape energy poverty experiences

- dynamics of sharing household responsibilities influence the experience of living in energy poverty and coping mechanisms

## The interplay between (un)paid care work and paid labour

- women typically assume primary caregiving roles and therefore tend to spend more time at home, facing conditions of energy deprivation.

# Policy recommendations for inclusion and energy affordability

## General awareness and understanding of energy poverty and gender and affordable energy

- Impact assessment of energy policies from an intersectional perspective to understand how energy policies affect the people differently
- Integrated and coherent policy framework at all levels: integrate energy poverty measures into broader policies, including root causes of (energy) poverty: Promote the redistribution of unpaid care work in society, addressing the care trap
- Public consultation and community and stakeholder engagement: engage with vulnerable HH; establish advisory boards on gender and inclusion, e.g. for REPowerEU, etc.
- Removing barriers to financial support for structurally excluded groups

## Specific gender recommendations

- Establish national gender training programs to enhance gender awareness: ask the experts😊
- Improve collection of gender-disaggregated and intersectional data on energy poverty
- Introduce targeted gender financing mechanisms, e.g. subsidies, grants, low-interest loans

# THANK YOU



**INSTAGRAM**

@WECF.GERMANY  
@WECF\_INTERNATIONAL

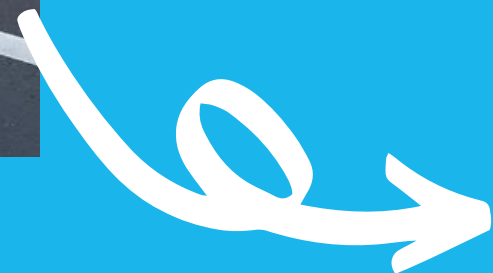


**FACEBOOK**

@WECF DEUTSCHLAND  
@WECF.INTERNATIONAL

Katharina Habersbrunner

Katharina.habersbrunner@wecf.org



**WECF.ORG**



# LITERATURE

- EIGE, 2016. Poverty, gender and lone parents in the EU. Vilnius: EIGE.
- Eurostat, 2023b. Persons at risk of poverty or social exclusion by income quantile and household composition. [Online]. Available at: [https://ec.europa.eu/eurostat/databrowser/product/page/ILC\\_PEPS03N](https://ec.europa.eu/eurostat/databrowser/product/page/ILC_PEPS03N). [Accessed 17 01 2024].
- Habersbrunner, K., Noreña Ospina, M. & Wieser, P., 2024. Study on gender-disaggregated data on energy poverty. The Economic and Social Committee. Brussels.
- Ivanova, D. & Middlemiss, L., 2021. Characterizing the energy use of disabled people in the European Union towards inclusion in the energy transition. *nature energy*, Volume 6, pp. 1188-1197.
- Oliveras, L. et al., 2020. The association of energy poverty with health, health care utilisation and medication use in southern Europe. *SSM- Population Health*, Volume 12 (100665).

